

## USER'S MANUAL AND SPARE PARTS CATALOGUE



ECOLOGICAL ROTARY CUTTER  
RDMR 120 / 140 / 160 / 180 / 200 ECO  
RDMR 200 / 230 / 250 / 270 / 300 ECO DOUBLE



Review: B  
Date: 01/09/2014  
Code: 0.4101.0028

MEC-RUL reserves the right to modify the technical specifications of its products without prior notice and with no obligation to modify products that have already been sold.

## CONTENTS

- PAGE 03
- Safety Notes
  - Technical Specifications
  - Technical Features

- PAGE 04
- Main Components
  - Working Instructions

- PAGE 05
- Cutting Height Adjustment
  - Clutch Adjustment
  - Working Speed
  - Maintenance

- PAGE 06
- Warranty Terms
  - Spare Parts

- PAGE 08
- Eco Frame

- PAGE 10
- Double Eco Frame

- PAGE 12
- Eco Central  
Transmission Box

- PAGE 14
- Central Transmission  
Box Eco Double

- PAGE 16
- Lateral Transmission  
Box Eco Double

- PAGE 17
- Transmission Bar Eco Double

- PAGE 18
- Cardan Shaft

# ECOLOGICAL ROTARY CUTTER MANUAL

## SAFETY NOTES

- Carefully read all instructions and get familiar with all information herein contained;
- Do not allow untrained people to operate the equipment, as accidents can happen;
- Do not carry the trimmer or make any overhaul/inspection with the PTO engaged;
- Do not allow people nearby the machine while in operation;
- During transportation, be careful with the implement width in narrow places;
- Do not carry people or objects over the trimmer;
- We do not recommend that you operate the trimmer on unplowed or stony soils;
- On rough terrain, hills or slopes, operate your trimmer at the proper speed.

## TECHNICAL SPECIFICATIONS

- Direct transmission box with helical teeth gears, eliminating unnecessary belt stops, making it quicker and more profitable;
- Free-spinning boxes bathed in oil;
- Cardan shaft with adjustable-torque clutch, providing protection to the implement and to the tractor.

## TECHNICAL FEATURES

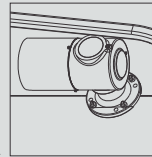
DESCRIPTION	RDMR 120 ECO	RDMR 140 ECO	RDMR 160 ECO	RDMR 180 ECO	RDMR 200 ECO	RDMR 230 ECO	RDMR 250 ECO	RDMR 270 ECO	RDMR 300 ECO
LENGTH	1,95 m	2,14 m	2,34 m	2,61 m	2,75 m	2,07 m	2,13 m	2,13 m	2,60 m
OVERALL WIDTH	1,24 m	1,51 m	1,62 m	1,87 m	2,07 m	2,37 m	2,57 m	1,73 m	3,11 m
CUTTING WIDTH	1,20 m	1,40 m	1,61 m	1,86 m	2,06 m	2,35 m	2,55 m	2,70 m	3,01 m
CUTTING HEIGHT	2,5 a 20 cm	2,5 a 20 cm	2,5 a 20 cm	2,5 a 20 cm	2,5 a 20 cm	2,5 a 20 cm	2,5 a 20 cm	2,5 a 20 cm	2,5 a 20 cm
WEIGHT	264 kg	334 kg	390 kg	443 kg	483 kg	585 kg	605 kg	625 kg	760 kg
KNIVES ROTATION	1080 rpm	1080 rpm	1080 rpm	1080 rpm	1080 rpm	1080 rpm	1080 rpm	1080 rpm	1080 rpm
PTO ROTATION	540 rpm	540 rpm	540 rpm	540 rpm	540 rpm	540 rpm	540 rpm	540 rpm	540 rpm
PRODUCTION	0,6 a 1,0 ha/h	0,7 a 1,2 ha/h	0,8 a 1,4 ha/h	0,8 a 1,5 ha/h	1,0 a 1,4 ha/h	1,2 a 1,4 ha/h	1,3 a 1,5 ha/h	1,4 a 1,6 ha/h	1,5 a 2,0 ha/h
PTO POWER	15-30 hp	30-50 hp	50-60 hp	50-60 hp	50-60 hp	50-70 hp	60-80 hp	60-80 hp	80-90 hp

## MAIN COMPONENTS

### CENTRAL TRANSMISSION BOX (Figure A)

Nodular cast iron housing, mounted with a crown and pinion assy with helical tapered teeth and free-spinning in oil bath.

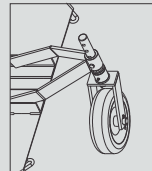
Figure A



### HEIGHT-ADJUSTING WHEEL (Figure B)

Equipped with stamped wheel. A bored axle allows you to adjust height.

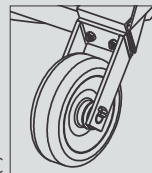
Figure B



### FRONT SUPPORT WHEEL (Figure C)

Equipped with stamped wheel for front support.

Figure C



### CUTTING ASSY (Figure D)

Tempered and balanced carbon steel blades.

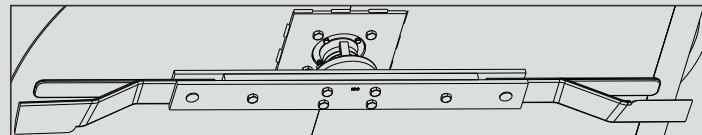
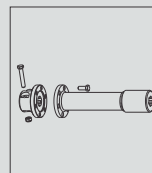


Figure D

### TRANSMISSION BAR (figure E)

The transmission boxes are interconnected with a transmission bar.

Figure E



## WORKING INSTRUCTIONS

- Hitch the equipment to the tractor by means of the lower arm hitching pins by placing the lock pins;
- On the third point, use the chain that comes with the equipment and leave it with clearance so that the equipment can follow the undulation of the terrain. Offered as an optional is an articulator, which can be used on the upper part of the equipment, together with the third point of the tractor;
- After hitching the equipment to the tractor, center it and level it in relation to the tractor. The cardan clutch side must be positioned at the equipment box. Make sure there is enough penetration of the pipes and that the pins and screws are well fastened;
- If you need to adjust the length, cut the two parts of the cardan shaft proportionally, cut the safety protection and remove burrs. Mount observing the crosspieces alignment. Make sure you reinstall the cardan shaft safety protection;
- During operation, rotation must be kept constant at 540 RPM on the PTO. Do not vary the average speed of the tractor during cutting, as this will result in inefficient cutting;
- We recommend that you do not make abrupt maneuvers with the equipment supported on the ground. Lift it only when needed to divert from possible obstacles, thus avoiding damaging the cardan shaft crosspieces;
- As per NR 31 Standard of Directive 86, dated March 2009 – item 31.12.3, use only machines, equipment and implements whose power transmissions are protected.

## CUTTING HEIGHT ADJUSTMENT

- Cutting height adjustment can be made through the wheel, by changing the position of the pin, lowering the wheel to increase the cutting height or, reversely, to decrease it;
- For models with side height adjustment, adjustment is made through the slider support group by loosening the nuts until the height adjusting locks loose, getting free to operate. Follow the same procedure on the other side so as to achieve symmetry.

## CLUTTCH ADJUSTMENT

The friction clutch provides protection to the transmission system of the tractor and implement. This device is adjusted so that the disc skids only when it encounters an obstacle. Under normal working conditions, if it skids, tighten evenly all the bolts/screws evenly. When suffering an impact without skidding, follow the reverse process.

## WORKING SPEED

Recommended speed: from 4 to 6 km/h.

Speed may vary depending on the terrain conditions and on volume to be cut.

## MAINTENANCE

- Check the oil level of the transmission box daily in the level plug located in the front part of the box. Fill it up, if necessary, with SAE 140 oil;
- Clean and lubricate the lubrication points daily or every 8 hours of operation with good-quality grease. (Crosspieces, bar, tube and fork shaft);
- Keep the equipment blades always sharp. When undergoing sharpening, do it evenly on both sides not to affect balancing;
- In case a blade breaks or is lost, replace it immediately to avoid vibrations, damages and also to keep good-quality cutting;
- Check daily conditions of screws, nuts, pins. Retighten and replace them if necessary.

### COLOR CHOICE



GREEN



RED



YELLOW



BLUE

## WARRANTY TERM

Mec-Rul warrants its products for any defects in its material and craftsmanship for a period of 180 days counted from the shipment date (bill of lading).

The warranty covers the replacement of any part or original accessory and product component - after evaluated by the technics and examined by Rugeri Mec-Rul S/A or the manufacturer of the part or accessory that proves no misapplication of it.

The warranty also does not cover perishable materials, these ones considered with predictable replacement or wear out by constant use and friction with its ground application.

## SPARE PARTS

When ordering spare parts, please indicate the quantity and P/N of the part, as per catalogue. Whenever possible, please inform also the equipment number which is engraved on the machine chassis of the machine.

## TRANSLATIONS INTO OTHER LANGUAGES

Para versões em português e espanhol desse material, acesse [www.mec-rul.com.br](http://www.mec-rul.com.br)

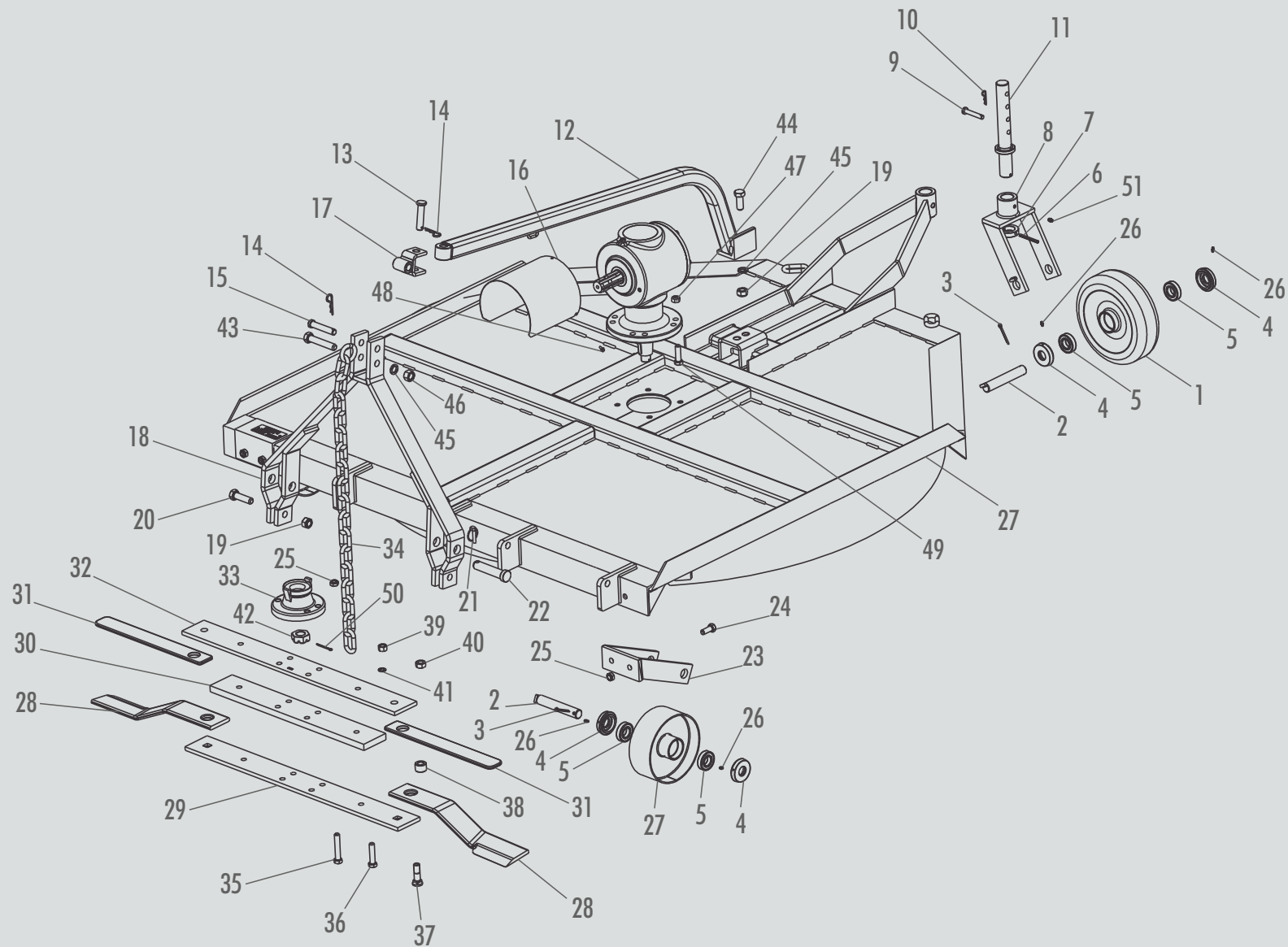
For Portuguese and Spanish versions of this guide, visit [www.mec-rul.com.br](http://www.mec-rul.com.br)

Para versiones en portugués y español de este manual, visite [www.mec-rul.com.br](http://www.mec-rul.com.br)

Note: the cardan shaft has its own manual, which must be followed for operating instructions.

[illegible]This image shows a single sheet of white paper with horizontal ruling lines. The lines are evenly spaced and run across the width of the page. There are no margins, text, or other markings on the paper.

# FRAME RDMR 120/140/160/180 AND 200 ECO



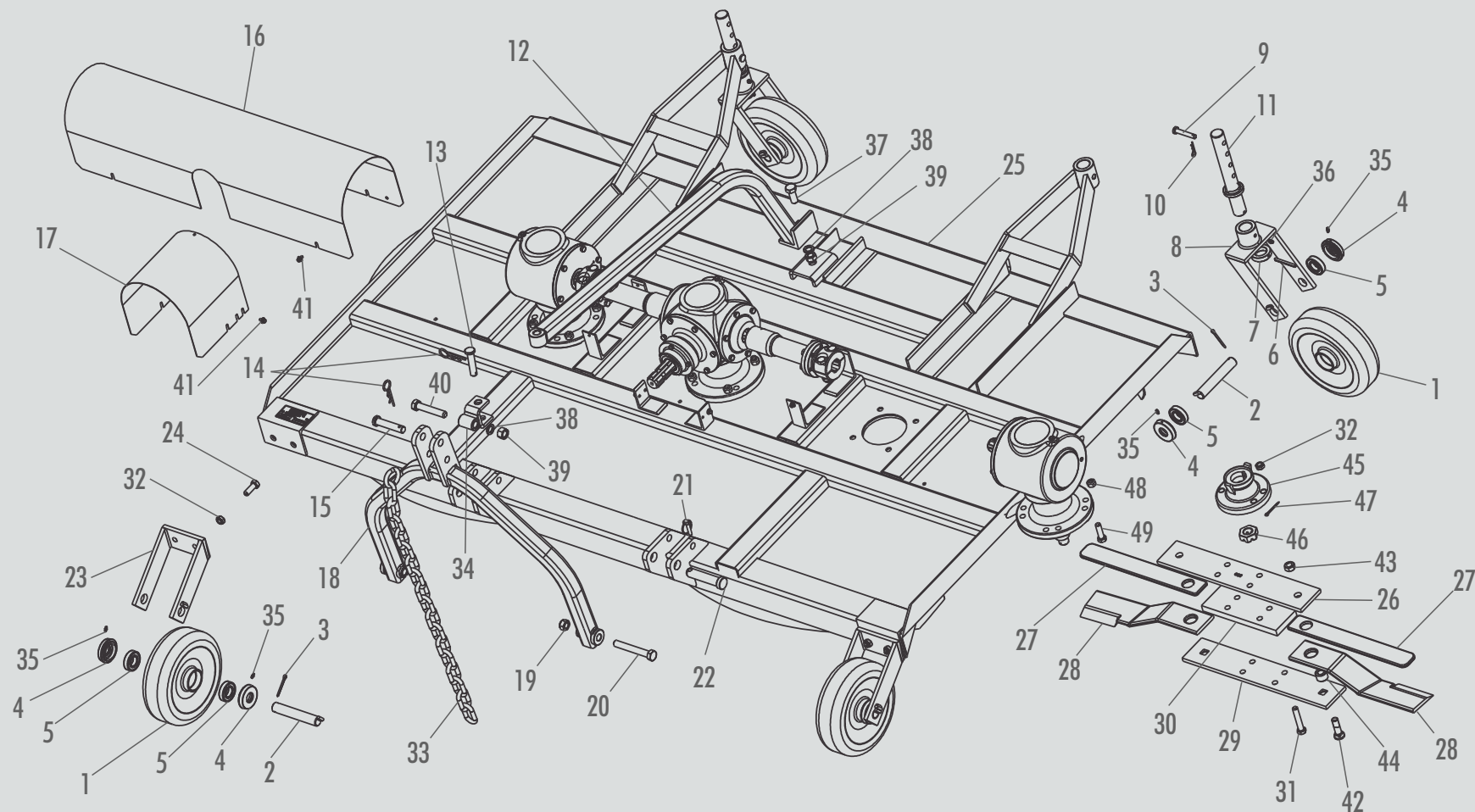


ITEM	CODE	NAME	RDMR 120	RDMR 140	RDMR 160	RDMR 180	RDMR 200
1	2.0002.7022	WHEEL RDMR	1	1	1	1	1
2	5.0002.7021	WHEEL SHAFT GROUP	3	3	3	3	3
3	0.1001.0001	COTTERPIN 1/4" X 2"	3	3	3	3	3
4	3.0027.1189	WHEEL PROTECTION COVER	6	6	6	6	6
5	0.2701.0041	BEARING 6206 ZZ	6	6	6	6	6
6	0.2101.0003	PIN	1	1	1	1	1
7	3.0020.1025	LOWER BUSHING	1	1	1	1	1
8	5.0002.7020	FORK GROUP	1	1	1	1	1
9	2.0020.1023	WHEEL ADJUSTING PIN	1	1	1	1	1
10	0.1901.0003	CLAMP Ø 3X55	1	1	1	1	1
11	5.0002.0023	FORK SHAFT GROUP	1	1	1	1	1
12	5.0020.1111	TUBULAR ROD GROUP	1	X	X	X	X
12	5.0022.1111	TUBULAR ROD GROUP	X	1	X	X	X
12	5.0023.0113	TUBULAR ROD GROUP	X	X	1	X	X
12	5.0025.0114	TUBULAR ROD GROUP	X	X	X	1	X
12	5.0026.0112	TUBULAR ROD GROUP	X	X	X	X	1
13	2.0020.1068	ARMS PIN	1	1	1	1	1
14	0.1901.0002	CLAMP FIX. Ø 4X75	2	2	2	2	2
15	2.0028.1018	HITCHING PIN	1	1	1	1	1
16	2.0023.1103	CLUTCH PROTECTION	1	1	1	1	1
17	5.0023.0143	TOWER GROUP	1	1	1	1	1
18	5.0020.0135	ARMS GROUP	1	1	X	X	X
18	5.0023.0142	ARMS GROUP	X	X	1	1	1
19	0.2305.0002	SELF-LOCK. NUT. MA20	3	3	3	3	3
20	0.2404.0032	HEX. SCREW. MA20X70	2	2	2	2	2
21	0.2102.0001	LOCK PIN	2	2	2	2	2

ITEM	CODE	NAME	RDMR 120	RDMR 140	RDMR 160	RDMR 180	RDMR 200
22	2.0020.1153	THIRD-POINT PIN	2	X	X	X	X
22	2.0020.1152	THIRD-POINT PIN	X	2	X	X	X
22	2.0030.1199	THIRD-POINT PIN	X	X	2	2	2
23	5.0002.7023	FORK GROUP	X	2	2	2	2
23	5.0002.7025	FORK GROUP	2	X	X	X	X
24	0.2404.0077	HEX. SCREW M16X45	4	4	4	4	4
25	0.2305.0001	SELF-LOCK. NUT. MA16	8	8	8	8	8
26	0.1701.0002	GREASE FITTING 1/4" UNF-28	2	2	2	2	2
27	5.0002.7006	FRAME GROUP 120	1	X	X	X	X
27	5.0002.7007	FRAME GROUP 140	X	1	X	X	X
27	5.0002.7008	FRAME GROUP 160	X	X	1	X	X
27	5.0002.7009	FRAME GROUP 180	X	X	X	1	X
27	5.0002.7010	FRAME GROUP 200	X	X	X	X	1
28	2.0027.1048	LEFT HAND BLADE	2	2	2	X	X
28	2.0027.1188	LEFT HAND BLADE	X	X	X	2	2
29	3.0020.1040	LOWER BLADE FASTENER	1	X	X	X	X
29	3.0022.1023	LOWER BLADE FASTENER	X	1	X	X	X
29	3.0021.1024	LOWER BLADE FASTENER	X	X	1	X	X
29	3.0025.1010	LOWER BLADE FASTENER	X	X	X	1	X
29	3.0026.1024	LOWER BLADE FASTENER	X	X	X	X	1
30	2.0027.1045	BLADES SPACER	1	X	X	X	X
30	2.0027.1076	BLADES SPACER	X	1	X	X	X
30	2.0027.1125	BLADES SPACER	X	X	1	X	X
30	2.0027.1088	BLADES SPACER	X	X	X	1	X
30	2.0027.1173	BLADES SPACER	X	X	X	X	1
31	2.0027.1049	UPPER BLADE	2	2	2	2	2

ITEM	CODE	NAME	RDMR 120	RDMR 140	RDMR 160	RDMR 180	RDMR 200
32	3.0020.1038	BLADES UPPER FASTENER	1	X	X	X	X
32	3.0022.1021	BLADES UPPER FASTENER	X	1	X	X	X
32	3.0021.1022	BLADES UPPER FASTENER	X	X	1	X	X
32	3.0025.1008	BLADES UPPER FASTENER	X	X	X	1	X
32	3.0026.1022	BLADES UPPER FASTENER	X	X	X	X	1
33	2.0023.1022	BLADES FASTENING SUPPORT	1	1	1	1	1
34	0.1301.0003	CHAIN	1	1	1	1	1
35	0.2404.0055	HEX. SCREW M16X90	4	4	4	4	4
36	0.2404.0060	HEX. SCREW M16X70	X	X	2	2	2
37	0.2405.0014	SCREW. 3/4"X70 - 16	2	2	2	2	2
38	2.0027.1296	BLADES BUSHING RDMR ECO	2	2	2	2	2
39	0.2304.0004	HEX. NUT MA16	X	X	2	2	2
40	0.2404.0040	HEX. NUT - TORQUE MB 3/4' - 16	2	2	2	2	2
41	0.0703.0008	SPRING WASHER M16	X	X	2	2	2
42	0.2301.0004	HEX. NUT 2' MB 30	1	1	1	1	1
43	0.2404.0040	HEX. SCREW M20X110	1	1	1	1	1
44	0.2404.0030	HEX. SCREW M20X50	1	1	1	1	1
45	0.0703.0009	SPRING WASHER M20	4	4	2	2	2
46	0.2304.0005	HEX. NUT MA20	1	1	1	1	1
47	0.2303.0004	HEX. NUT - TORQUE MB 16	4	4	4	4	4
48	0.2405.0010	FLANGED HEX. SCREW M6X12	3	3	3	3	3
49	0.2404.0074	HEX. SCREW. MB 16X55	4	4	4	4	4
50	0.1001.0004	COTTERPIN 5/32" X 2"	1	1	1	1	1
51	0.1701.0001	GREASE FITTING 1/8" UNF-28	1	1	1	1	1

# FRAME RDMR 200/230/250/270 AND 300 ECO DOUBLE

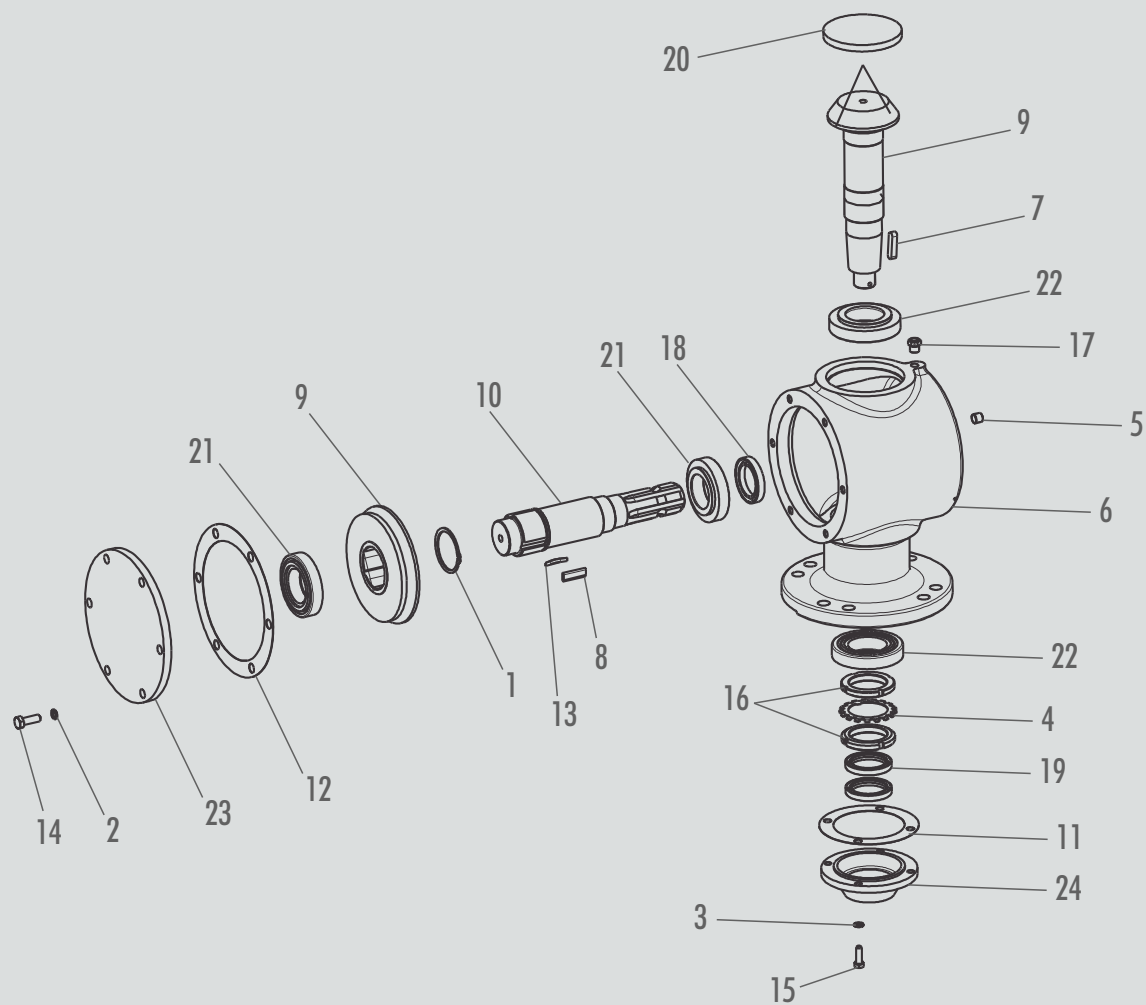


ITEM	CODE	NAME	RDMR 200 DOUBLE	RDMR 230 DOUBLE	RDMR 250 DOUBLE	RDMR 270 DOUBLE	RDMR 300 DOUBLE
1	2.0002.7022	WHEEL RDMR	4	4	4	4	4
2	5.0002.7021	WHEEL SHAFT GROUP	4	4	4	4	4
3	0.1001.0001	COTTERPIN 1/4" X 2"	4	4	4	4	4
4	3.0027.1189	WHEEL PROTECTION COVER	8	8	8	8	8
5	0.2701.0041	BEARING 6206 ZZ	8	8	8	8	8
6	0.2101.0003	ELASTIC PIN	2	2	2	2	2
7	3.0020.1025	LOWER BUSHING	2	2	2	2	2
8	5.0002.7020	FORK GROUP	2	2	2	2	2
9	2.0020.1023	WHEEL ADJUSTING PIN	2	2	2	2	2
10	0.1901.0003	CLAMP Ø 3X55	2	2	2	2	2
11	5.0002.0123	FORK SHAFT GROUP	2	2	2	2	2
12	5.0022.1111	TUBULAR ROD GROUP	1	X	X	X	X
12	5.0023.0113	TUBULAR ROD GROUP	X	1	1	1	X
12	5.0025.0114	TUBULAR ROD GROUP	X	X	X	X	1
13	2.0020.1068	ARMS PIN	1	1	1	1	1
14	0.1901.0002	CLAMP FIX. Ø 4X75	2	2	2	2	2
15	2.0028.1079	HITCHING PIN	1	1	1	1	1
16	2.0027.1223	BARS PROTECTION	1	X	X	X	X
16	2.0027.1050	BARS PROTECTION	X	1	X	X	X
16	2.0027.1067	BARS PROTECTION	X	X	1	1	X
16	2.0027.1160	BARS PROTECTION	X	X	X	X	1
17	2.0023.1085	CLUTCH PROTECTION	1	1	1	1	1
18	5.0028.0114	ARMS GROUP	1	1	1	1	1
19	0.2305.0002	ARMS GROUP MA20	2	2	2	2	2

ITEM	CODE	NAME	RDMR 200 DOUBLE	RDMR 230 DOUBLE	RDMR 250 DOUBLE	RDMR 270 DOUBLE	RDMR 300 DOUBLE
20	0.2404.0036	HEX. SCREW MA20X140	2	2	2	2	2
21	0.2102.0001	LOCK-PIN	2	2	2	2	2
22	2.0030.1199	THIRD-POINT PIN	2	2	2	2	2
23	5.0002.7022	FORK GROUP	2	2	2	2	2
24	0.2404.0077	SCREWM16X45	4	4	4	4	4
25	5.0002.7145	FRAME GROUP 200	1	X	X	X	X
25	5.0002.7137	FRAME GROUP 230	X	1	X	X	X
25	5.0002.7138	FRAME GROUP 250	X	X	1	X	X
25	5.0002.7139	FRAME GROUP 270	X	X	X	1	X
25	5.0002.7142	FRAME GROUP 300	X	X	X	X	1
26	3.0020.1038	BLADES UPPER FASTENER	2	2	X	X	X
26	3.0029.1012	BLADES UPPER FASTENER	X	X	2	X	X
26	3.0022.1021	BLADES UPPER FASTENER	X	X	X	2	X
26	3.0021.1022	BLADES UPPER FASTENER	X	X	X	X	2
27	2.0027.1224	UPPER BLADE	4	X	X	X	X
27	2.0027.1049	UPPER BLADE	X	4	4	4	4
28	2.0027.1226	LH BLADE	2	X	X	X	X
28	2.0027.1048	LH BLADE	X	2	2	2	2
28	2.0027.1225	RH BLADE	2	X	X	X	X
28	2.0027.1017	RH BLADE	X	2	2	2	2
29	3.0020.1040	BLADES LOWER FASTENER	2	2	X	X	X
29	3.0029.1014	BLADES LOWER FASTENER	X	X	2	X	X
29	3.0022.1023	BLADES LOWER FASTENER	X	X	X	2	X
29	3.0021.1024	BLADES LOWER FASTENER	X	X	X	X	2

ITEM	CODE	NAME	RDMR 200 DOUBLE	RDMR 230 DOUBLE	RDMR 250 DOUBLE	RDMR 270 DOUBLE	RDMR 300 DOUBLE
30	2.0027.1045	BLADES SPACER	2	2	X	X	X
30	2.0027.1069	BLADES SPACER	X	X	2	X	X
30	2.0027.1076	BLADES SPACER	X	X	X	2	X
30	2.0027.1125	BLADES SPACER	X	X	X	X	2
31	0.2404.0060	HEX. SCREW . MA16X70	4	4	4	4	4
32	0.2305.0001	SELF-LOCK HEX. NUT. MA16	16	16	16	16	16
33	0.1301.0003	CHAIN 18 ELOS	1	1	1	1	1
34	5.0023.0143	MOVABLE TOWER REINF. GROUP	1	1	1	1	1
35	0.1701.0002	GREASE FITTING 1/4" UNF - 28	8	8	8	8	8
36	0.1701.0001	GREASE FITTING 1/8" UNF - 28	2	2	2	2	2
37	0.2404.0030	CREW. M20X50	1	1	1	1	1
38	0.0703.0009	SPRING WASHER M20	1	1	1	1	1
39	0.2304.0005	HEX. NUT . MA20	2	2	2	2	2
40	0.2404.0040	SCREW. M20X110	1	1	1	1	1
41	0.2405.0005	FLANG. HEX. SCREW M8X12	8	8	8	8	8
42	0.2405.0014	SCREW 3/4"X70 - 16	4	4	4	4	4
43	0.2304.0010	HEX. NUT - TORQUE MB 3/4" - 16	4	4	4	4	4
44	2.0027.1296	BLADES BUSHING RDMR ECO	4	4	4	4	4
45	2.0023.1022	BLADES FASTENING SUPPORT	2	2	2	2	2
46	0.2301.0004	HEX. NUT - CAST. 2" MB30	2	2	2	2	2
47	0.1001.0004	COTTERPIN 5/32X2"	2	2	2	2	2
48	0.2303.0004	HEX. NUT - TORQUE MB16	12	12	12	12	12
49	0.2404.0074	HEX. SCREW MB16X55	12	12	12	12	12

# CENTRAL GEARBOX 120/140/160/180/200 ECO

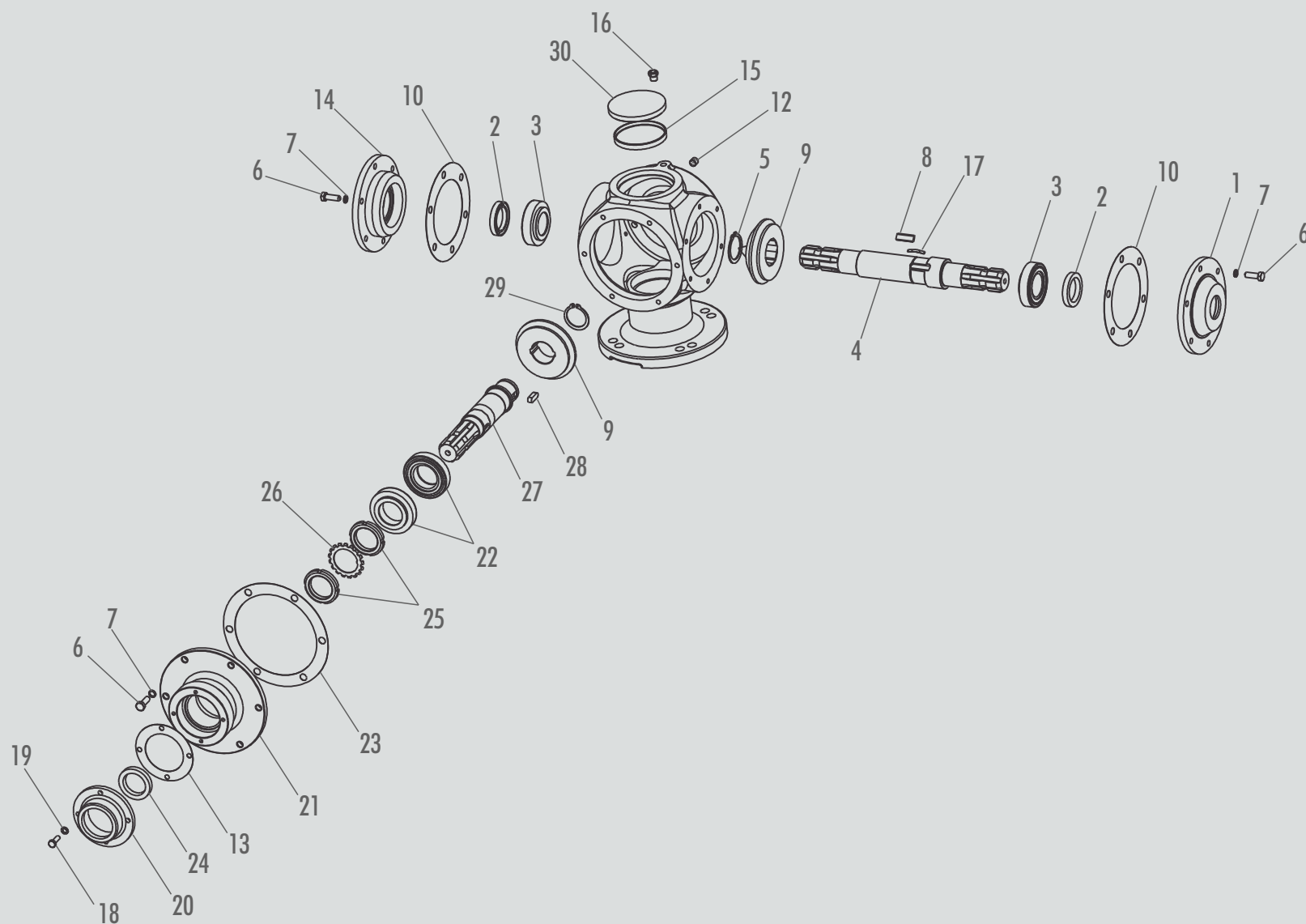


ITEM	CODE	NAME	RDMR 120 ECO	RDMR 140 ECO	RDMR 160 ECO	RDMR 180 ECO	RDMR 200 ECO
1	0.0404.0006	ELASTIC RING DAE60	X	X	1	1	1
1	3.1132.1040	SPACING BUSHING	1	1	X	X	X
2	0.0703.0005	SPRING WASHER M10	6	6	6	6	6
3	0.0703.0004	SPRING WASHER M8	4	4	4	4	4
4	0.0704.0005	WASHER SKF KM 11-55	1	1	1	1	1
5	0.2801.0011	PLUG 1/4" NPT - 18	2	2	1	1	1
6	3.1120.1052	HOUSIN	X	X	1	1	1
6	3.1132.1059	GHOUSING	1	1	X	X	X
7	0.1101.0021	KEY 10X8X40	1	1	1	1	1
8	2.1120.1022	COUPLING KEY	3	3	3	3	3
9	6.0011.2014	CROWN-PINNION ASSY Z:21/11	X	X	1	1	1
9	6.0011.3210	CROWN-PINNION ASSY Z:19/10	1	1	X	X	X
10	3.1120.1027	CROWN SHAFT	X	X	1	1	1
10	3.1132.1038	CROWN SHAFT	1	1	X	X	X
11	2.0030.1190	GASKET	1	1	1	1	1
12	2.1040.1013	GASKET	X	X	1	1	1

ITEM	CODE	NAME	RDMR 120 ECO	RDMR 140 ECO	RDMR 160 ECO	RDMR 180 ECO	RDMR 200 ECO
12	2.1033.1004	GASKET	1	1	X	X	X
13	2.1120.1021	FLAT WASHER	3	3	3	3	3
14	0.2404.0008	HEX. SCREW M10X30	6	6	6	6	6
15	0.2404.0004	HEX. SCREW . M8X25	4	4	4	4	4
16	0.2306.0005	NUT SKF KM 11-55	2	2	2	2	2
17	0.0901.0006	BREATHER 1/4 NPT - 18	1	1	1	1	1
18	0.2601.0004	RETAINER 00359	X	X	1	1	1
18	0.2601.0012	RETAINER 01004	1	1	X	X	X
19	0.2601.0021	RETAINER 01783	2	2	2	2	2
20	0.2602.0002	CLOSED RETAINER	1	1	1	1	1
21	0.2702.0006	BEARING 30210	X	X	2	2	2
21	0.2702.0004	BEARING 30208	2	2	X	X	X
22	0.2702.0007	BEARING 30211	2	2	2	2	2
23	3.1120.1056	CLOSED COVER	X	X	1	1	1
23	2.1125.1002	OPEN COVER	1	1	X	X	X
24	3.1120.1003	LOWER HEAD COVER	1	1	1	1	1



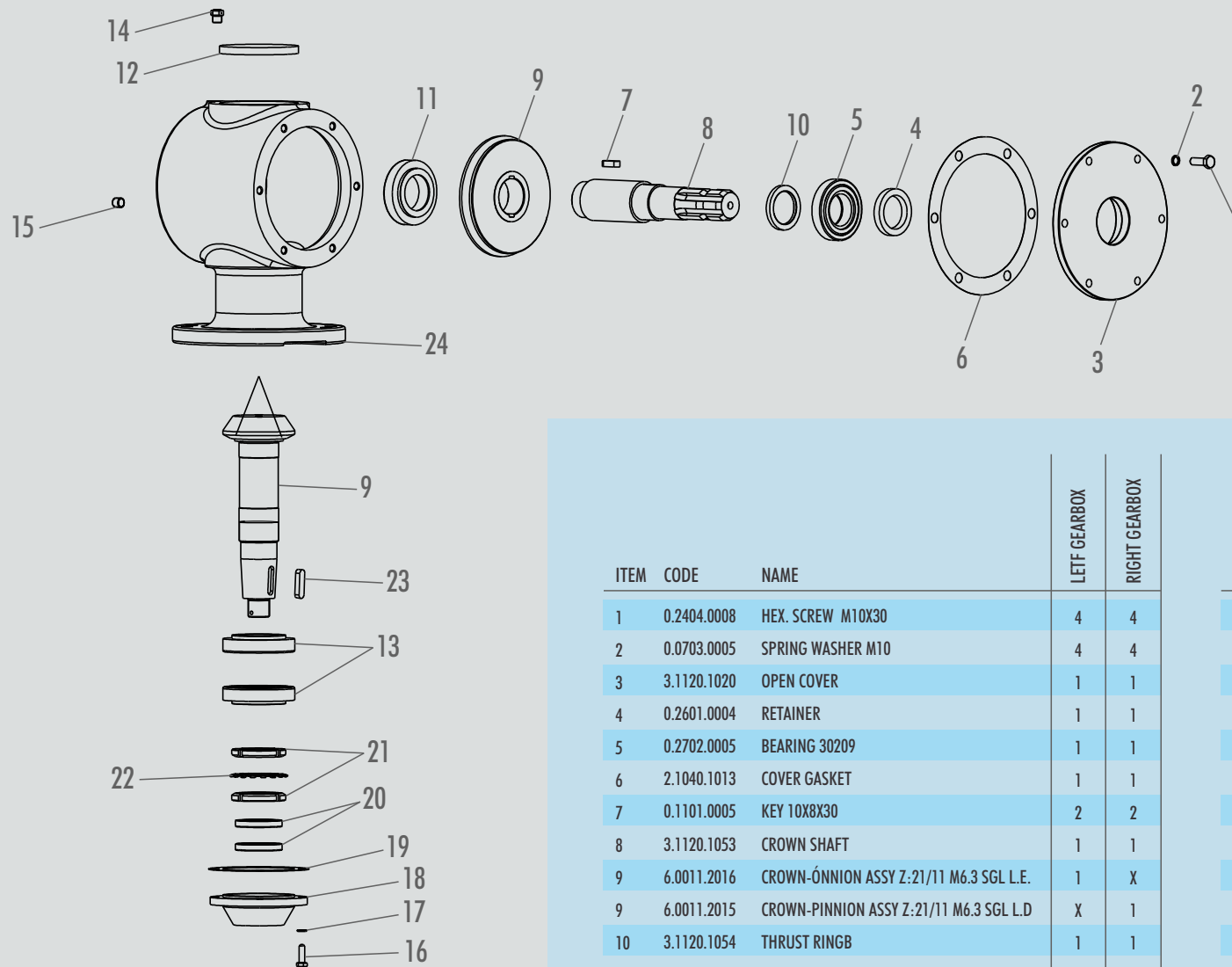
# CENTRAL GEARBOX RDMR 200/230/250/280/300 ECO - DOUBLE



ITEM	CODE	NAME	RDMR 200/230/250/280/300 ECO DOUBLE
1	2.1144.1003	OPEN COVER	1
2	0.2601.0004	RETAINER 01004 BAG	3
3	0.2702.0013	BEARING 30208	2
4	3.1144.1010	OUTLET SHAFT	1
5	0.0401.0007	ELASTIC RING DAE 40	1
6	0.2404.0008	HEX. SCREW . M10X30	18
7	0.0703.0005	SPRING WASHER M10	18
8	2.1120.1021	COUPLING KEY	3
9	6.0011.4411	CROWN-PINNION ASSY Z:15/15	1
10	2.1040.1011	SEALING GASKET	2
11	2.1144.1001	HOUSING	1
12	0.2801.0011	PLUG1/4" NPT - 18	1
13	2.1045.1022	GASKET	1
14	2.1144.1004	OPEN COVER	1
15	0.2602.0001	RETAINER	1

ITEM	CODE	NAME	RDMR 200/230/250/280/300 ECO DOUBLE
16	0.0901.0006	BREATHER 1/4' NPT - 18FIOS	1
17	2.1120.1022	SPRING	3
18	0.2404.0004	HEX. SCREW . M8X25	4
19	0.0703.0004	SPRING WASHER M8	4
20	3.1033.1019	HEAD COVER	1
21	2.1144.1002	HEAD	1
22	0.2702.0006	BEARING 30210	2
23	2.1040.1013	GASKET	1
24	0.2601.0004	RETAINER 00359 BRG	1
25	0.2306.0004	NUT SKF KM 10-50	2
26	0.0704.0004	WASHER SKF KM 10-50	1
27	3.1033.1015	PINNION SHAFT	1
28	0.1102.0005	KEY 10X8X30	2
29	0.0401.0003	ELASTIC RING DAE 45	1
30	0.2602.0002	CLOSED RETAINER	1

# LATERAL GEARBOX RDMR 200/230/250/270/300 ECO DOUBLE

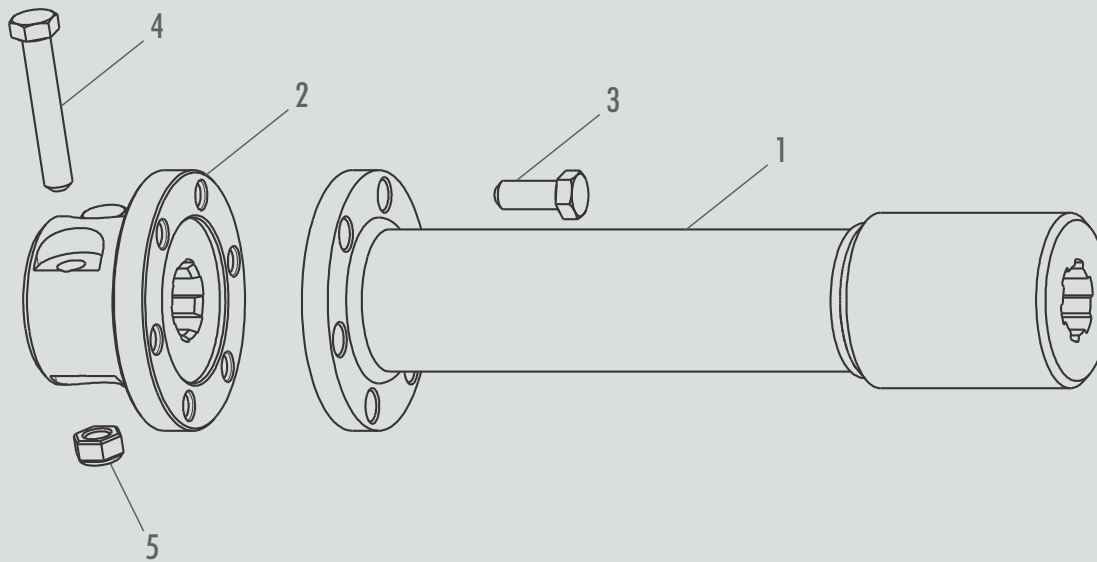


ITEM	CODE	NAME	LEFT GEARBOX	RIGHT GEARBOX
1	0.2404.0008	HEX. SCREW M10X30	4	4
2	0.0703.0005	SPRING WASHER M10	4	4
3	3.1120.1020	OPEN COVER	1	1
4	0.2601.0004	RETAINER	1	1
5	0.2702.0005	BEARING 30209	1	1
6	2.1040.1013	COVER GASKET	1	1
7	0.1101.0005	KEY 10X8X30	2	2
8	3.1120.1053	CROWN SHAFT	1	1
9	6.0011.2016	CROWN-PINNION ASSY Z:21/11 M6.3 SGL L.E.	1	X
9	6.0011.2015	CROWN-PINNION ASSY Z:21/11 M6.3 SGL L.D	X	1
10	3.1120.1054	THRUST RINGB	1	1
11	0.2702.0006	EARING 30210	1	1
12	0.2602.0002	CLOSED RETAINER	1	1

ITEM	CODE	NAME	LEFT GEARBOX	RIGHT GEARBOX
13	0.2702.0007	BEARING 30211	2	2
14	0.0901.0003	BREATHER 1/4" NPT - 18	1	1
15	0.2801.0011	PLUG1/4" NPT - 18	1	1
16	0.2404.0004	HEX. SCREW. M8X25	4	4
17	0.0703.0004	SPRING WASHER M8	4	4
18	3.1120.1003	HEAD COVER	1	1
19	2.0030.1190	GASKET	1	1
20	0.2601.0021	RETAINER	2	2
21	0.2306.0005	NUT SKF KM 9	2	2
22	0.0704.0005	WASHER SKF MB 9	1	1
23	0.1101.0021	KEY 10X8X40	1	1
24	3.1120.1023	HOUSING	1	1

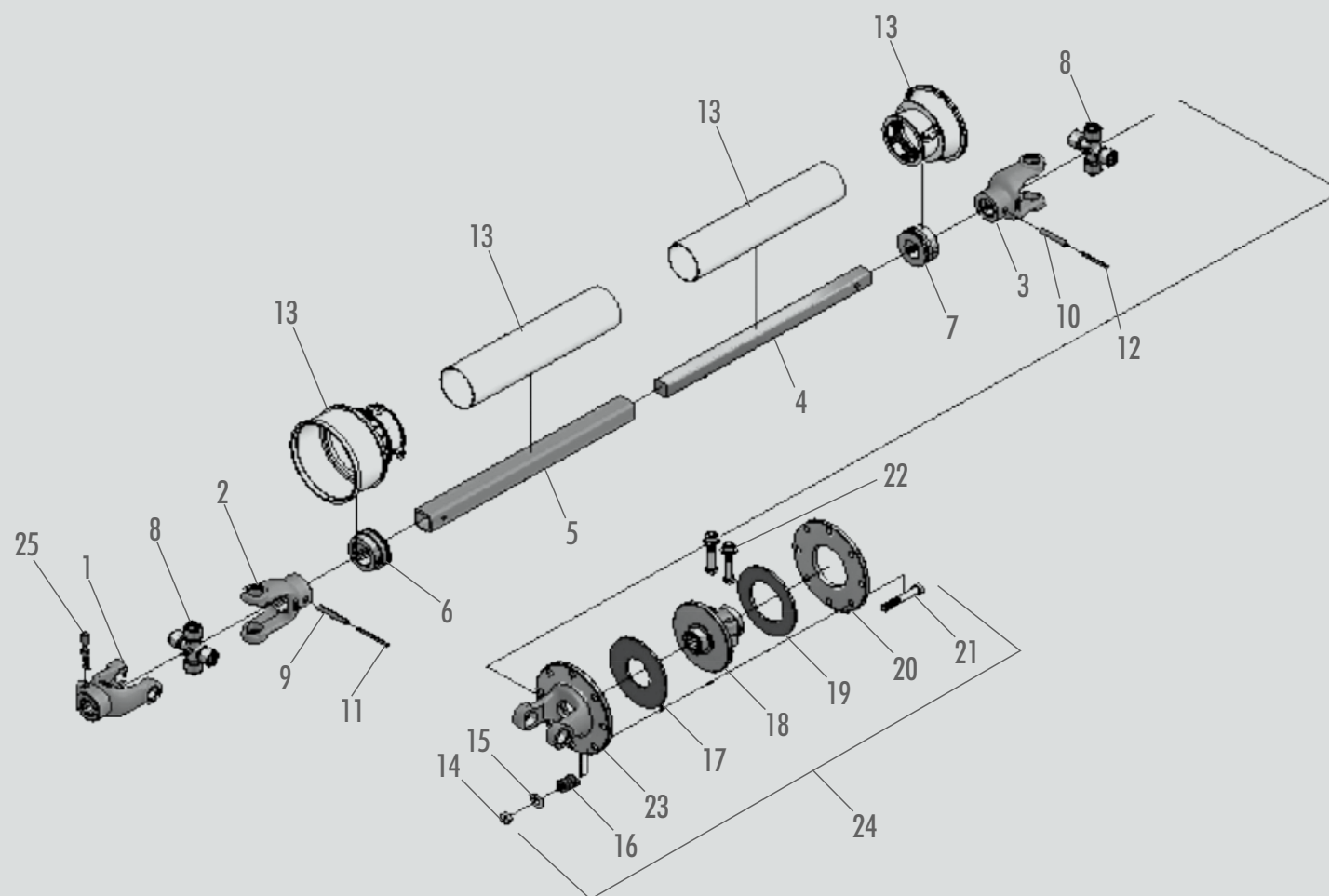
# TRANSMISSION BAR

## RDMR 200/230/250/270/300 ECO DOUBLE



ITEM	CODE	NAME	RDMR 200 ECO DOUBLE	RDMR 230 ECO DOUBLE	RDMR 250 ECO DOUBLE	RDMR 270 ECO DOUBLE	RDMR 300 ECO DOUBLE
1	5.0002.7147	SMALL BAR GROUP RDMR 200	1	X	X	X	X
1	5.0002.7148	LARGE BAR GROUP RDMR 200	1	X	X	X	X
1	5.0002.7215	SMALL BAR GROUP RDMR 230	X	1	X	X	X
1	5.0002.7216	LARGE BAR GROUP RDMR 230	X	1	X	X	X
1	5.0002.7123	SMALL BAR GROUP RDMR 250	X	X	1	X	X
1	5.0002.7124	LARGE BAR GROUP RDMR 250	X	X	1	X	X
1	5.0002.7121	SMALL BAR GROUP RDMR 270	X	X	X	1	X
1	5.0002.7122	LARGE BAR GROUP RDMR 270	X	X	X	1	X
1	5.0002.7127	SMALL BAR GROUP RDMR 300	X	X	X	X	1
1	5.0002.7128	LARGE BAR GROUP RDMR 300	X	X	X	X	1
2	3.0027.1114	TRANSMISSION BAR TERMINAL	X	2	2	2	2
3	0.2404.0012	HEX. SCREW . M12X30	X	12	12	12	12
4	0.2404.0041	HEX. SCREW. M12X80	4	4	4	4	4
5	0.2305.0001	SELF-LOCK HEX. NUT. MA 12	4	4	4	4	4

# CARDAN SHAFT





ITEM	CODE	NAME	RDMR 120 ECO	RDMR 140 ECO	RDMR 160 ECO	RDMR 180 ECO	RDMR 200 ECO	RDMR 200 ECO DOUBLE	RDMR 230 ECO DOUBLE	RDMR 250 ECO DOUBLE	RDMR 270 ECO DOUBLE	RDMR 300 ECO DOUBLE
1	2.0060.1102	QUICK-COUPLING TERMINAL (Z6 – 1.3/8")	X	X	1	1	1	1	1	1	1	1
1	2.0060.1127	QUICK-COUPLING TERMINAL (Z6 – 1.3/8")	1	1	X	X	X	X	X	X	X	X
2	2.0060.1103	SQUARE HOLE TERMINAL – FEMALE	X	X	1	1	1	1	1	1	1	1
2	2.0060.1128	SQUARE HOLE TERMINAL – FEMALE	1	1	X	X	X	X	X	X	X	X
3	2.0060.1106	SQUARE HOLE TERMINAL – MALE	X	X	1	1	1	1	1	1	1	1
3	2.0060.1129	SQUARE HOLE TERMINAL – MALE	1	1	X	X	X	X	X	X	X	X
4	2.0060.1105	SQUARE BAR - MALE (0,700 M)	1	1	1	X	X	1	1	1	1	X
4	2.0060.1136	SQUARE BAR - MALE (1,00 M)	X	X	X	1	1	X	X	X	X	X
4	2.0060.1168	SQUARE BAR - MALE (0,850M)	X	X	X	X	X	X	X	X	X	1
5	2.0060.1104	SQUARE TUBE - FEMALE (0,700 M)	1	1	1	X	X	1	1	1	1	X
5	2.0060.1137	SQUARE TUBE - FEMALE (1,00 M)	X	X	X	1	1	X	X	X	X	X
5	2.0060.1169	SQUARE TUBE – FEMALE (0,850 M)	X	X	X	X	X	X	X	X	X	1
6	2.0060.1122	ADJUSTING BUSHING - FEMALE	X	X	1	1	1	1	1	1	1	1
6	2.0060.1130	ADJUSTING BUSHING – FEMALE	1	1	X	X	X	X	X	X	X	X
7	2.0060.1123	ADJUSTING BUSHING – MALE	1	1	1	1	1	1	1	1	1	1
8	0.3901.0004	CROSSPIECE WITH LOCK SPRING)	X	X	2	2	2	2	2	2	2	2
8	0.3901.0009	CROSSPIECE WITH LOCK SPRING)	2	2	X	X	X	X	X	X	X	X
8	0.3901.0001	CROSSPIECE WITH LOCK SPRING)	X	X	X	X	X	X	X	X	X	2
9	0.2101.0022	ELASTIC PIN 10 X 65	1	1	X	X	X	X	X	X	X	X
9	0.2101.0023	ELASTIC PIN 10 X 70	X	X	1	1	1	1	1	1	1	1
10	0.2101.0022	ELASTIC PIN 10 X 65	1	1	X	X	X	X	X	X	X	X
10	0.2101.0021	ELASTIC PIN 10 X 60	X	X	1	1	1	1	1	1	1	1
11	0.2101.0016	ELASTIC PIN 06 X 65	1	1	X	X	X	X	X	X	X	X

ITEM	CODE	NAME	RDMR 120 ECO	RDMR 140 ECO	RDMR 160 ECO	RDMR 180 ECO	RDMR 200 ECO	RDMR 200 ECO DOUBLE	RDMR 230 ECO DOUBLE	RDMR 250 ECO DOUBLE	RDMR 270 ECO DOUBLE	RDMR 300 ECO DOUBLE
11	0.2101.0004	ELASTIC PIN 06 X 60	X	X	1	1	1	1	1	1	1	1
12	0.2101.0016	ELASTIC PIN 06 X 65	1	1	X	X	X	X	X	X	X	X
12	0.2101.0017	ELASTIC PIN 06 X 70	X	X	1	1	1	1	1	1	1	1
13	2.0060.1124	COMPLETE PROTECTION ASSY	1	1	1	1	1	1	1	1	1	1
14	0.2305.0016	NUT BSW SELF-LOCKING ½" 12FPP	8	8	8	8	8	8	8	8	8	8
15	0.0702.0006	FLAT WASHER ½" X 24,0 X 3.0MM	8	8	8	8	8	8	8	8	8	8
16	0.2001.0002	SPRING - 30 X 35 MM IN DIAM.	8	8	8	8	8	8	8	8	8	8
17	0.0601.0004	FRICTION DISC 139 X 59 X 5 MM	1	1	1	1	1	1	1	1	1	1
18	2.0060.1141	GROOVED CORE WITH LAT. GRIP (Z6 – 1 3/8")	1	1	X	X	X	X	X	X	X	X
18	2.0060.1143	GROOVED CORE WITH LAT. GRIP (Z6 – 1 3/4")	X	X	1	1	1	1	1	1	1	1
19	0.0601.0010	FRICTION DISC 139 X 82 X 5 MM	1	1	X	X	X	X	X	X	X	X
19	0.0601.0005	FRICTION DISC 139 X 97 X 5 MM	X	X	1	1	1	1	1	1	1	1
20	0.0601.0011	IRON DISC - 180 X 85 X 3/8" IN DIAM.	1	1	X	X	X	X	X	X	X	X
20	0.0601.0006	IRON DISC - 180 X 98 X 3/8" IN DIAM.	X	X	1	1	1	1	1	1	1	1
21	0.2403.0007	HEX. SCREW BSW.RP ½" X 3 ½"	8	8	8	8	8	8	8	8	8	8
22	2.0060.1132	LAT. GRIP ASSY	2	2	X	X	X	X	X	X	X	X
22	2.0060.1126	LAT. GRIP ASSY	X	X	2	2	2	2	2	2	2	2
23	2.0060.1142	CLUTCH FLANGE SERIES 2000	1	1	X	X	X	X	X	X	X	X
23	2.0060.1138	CLUT FLANGE - SERIES 2500	X	X	1	1	1	1	1	1	1	1
24	5.0600.1515	COMPLETE CLUTCH ASSY	1	1	X	X	X	X	X	X	X	X
24	5.0600.1517	COMPLETE CLUTCH ASSY	X	X	1	1	1	1	1	1	1	1
25	2.0060.1101	QUICK-COUPLING ASSY	1	1	1	1	1	1	1	1	1	1





UM BRAÇO FORTE NA SUA TERRA

+ 55 54 3213 8800 | BR. 116 / KM 153,2 - Bairro Panazzolo - 95080-050 - Caxias do Sul /RS - Brazil

[vendas@mec-rul.com.br](mailto:vendas@mec-rul.com.br) | [rugeri@mec-rul.com.br](mailto:rugeri@mec-rul.com.br) | [www.mec-rul.com.br](http://www.mec-rul.com.br)



ECOLOGICAL ROTARY CUTTER

RDMR 120 / 140 / 160 / 180 / 200 ECO

RDMR 200 / 230 / 250 / 270 / 300 ECO DOUBLE