

# USER'S MANUAL AND SPARE PARTS CATALOGUE



## AGRICULTURAL ROTARY CUTTER

RDMR 120 / 130 / 140 / 150 / 160L / 160P / 170 / 180 / 200

RDMRA 120 / 1000

RDMR 140 / 1000

Revision: D  
Date: 01/08/2016  
Código: 041010030

## CONTENTS

---

### PAGE 04

- Safety Notes
- Technical Specifications
- Technical Features

### PAGE 05

- Main Components
- Working Speed
- Working Instructions

### PAGE 06

- Cutting Height Adjustment
- Clutch Adjustment
- Cutting Position
- Maintenance

### PAGE 07

- Warranty Term
- Spare Parts
- Translation Versions
- General Notes

### PAGE 08

- Rotary Cutter Frame

### PAGE 16

- Transmission Box

### PAGE 18

- Clutch and Cardan Shaft  
With Protection

# ROTARY CUTTER MANUAL

## SAFETY NOTES

- Carefully read all instructions and get familiar with all information herein contained;
- Do not allow untrained people to operate the equipment, as accidents can happen;
- Do not carry the rotary cutter or make any overhaul/inspection with the PTO engaged;
- Do not allow people nearby the machine while in operation;
- During transportation, be careful with the implement width in narrow places;
- We do not recommend that you operate the rotary cutter on unplowed or Stony soils;
- On rough terrain, hills or slopes, operate your rotary cutter at the proper speed.

## TECHNICAL SPECIFICATIONS

- Transmission box with helical teeth gears, eliminating unnecessary belt stops, making it quicker and profitable;
- Free-spinning bathed in oil box;
- Cardan shaft with adjustable-torque clutch, providing protection to the implement and to the tractor.

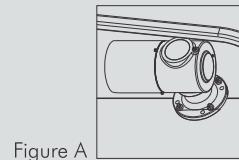
## TECHNICAL FEATURES

DESCRIPTION	RDMR 120	RDMR 130	RDMR 140	RDMR 150	RDMR 160 L	RDMR 160 P	RDMR 170	RDMR 180	RDMR 200	RDMRA 120	RDMR 140/1000
LENGTH	1,85 m	2,10m	2,10m	2,35m	2,35m	2,35m	2,50m	2,50m	2,70m	1,85m	2,10m
OVERALL WIDTH	1,37m	1,48m	1,48m	1,72m	1,72m	1,72m	1,98m	1,98m	2,22m	1,37m	1,48m
CUTTING WIDTH	1,20m	1,30m	1,40m	1,50m	1,60m	1,60m	1,70m	1,80m	2,00m	1,20m	1,40m
CUTTING HEIGHT	2,5 a 20cm	2,5 a 20cm	2,5 a 20cm	2,5 a 20cm	2,5 a 20cm	2,5 a 20cm	2,5 a 20cm	2,5 a 20cm	2,5 a 20cm	2,5 a 20cm	2,5 a 20cm
WEIGHT WITH NO H. ADJ.	228kg	286kg	289kg	344kg	350kg	365kg	401kg	410kg	462kg	228kg	289kg
WEIGHT WITH H. ADJ.	244kg	300kg	303kg	353kg	362kg	374kg	415kg	422kg	480kg	244kg	303kg
KNIVES ROTATION	1026rpm	1026rpm	1026rpm	1026rpm	1026rpm	1031rpm	1031rpm	1031rpm	1031rpm	1026rpm	1026rpm
PTO ROTATION	540rpm	540rpm	540rpm	540rpm	540rpm	540rpm	540rpm	540rpm	540rpm	1000rpm	1000rpm
PRODUCTION	0,6 a 1,0 ha/h	0,6 a 1,15ha/h	0,7 a 1,2ha/h	0,8 a 1,35ha/h	0,8 a 1,4ha/h	0,8 a 1,4ha/h	0,8 a 1,45ha/h	0,8 a 1,5ha/h	0,8 a 1,6ha/h	0,6 a 1,0ha/h	0,7 a 1,2ha/h
PTO POWER	15-30HP	15-30HP	30-50HP	50-60HP	50-60HP	50-60HP	60-80HP	60-80HP	60-80HP	15-30HP	30-50HP

## MAIN COMPONENTS

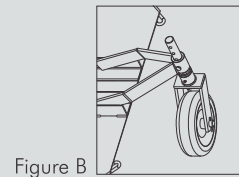
### CENTRAL BOX (Figure A)

Nodular cast iron housing, mounted with a crown and pinion assy with helical tapered teeth and free-spinning in oil bath.



### HEIGHT-ADJUSTING WHEEL (Figure B)

Equipped with stamped wheel. A bored axle allows you to adjust height.



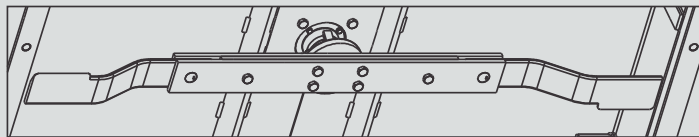
### SLIDER ASSY (Figure C)

Reinforced plate frame, with replaceable support base.



### CUTTING ASSY (Figure D)

Tempered and balanced carbon steel blades.



## WORKING SPEED

Recommended speed: from 4 to 6 km/h. Speed may vary depending on the terrain conditions and on volume to be cut.

## WORKING INSTRUCTIONS

- Couple the rotary cutter to the tractor by means of the lower arm coupling pins (place the lock pins);
- On the third point, use a chain (which comes with the rotary cutter) and leave it with clearance so that the rotary cutter can follow the undulation of the terrain. Offered as an optional is an articulator, which can be used on the upper part of the rotary cutter, along with the third point of the tractor;
- After coupling the rotary cutter to the tractor, center it and level it in relation to the tractor. The cardan clutch side must be positioned at the rotary cutter box. Make sure there is enough penetration of pipes and that pins or screws are well positioned;
- If you need to adjust the length, cut the two parts of the cardan shaft proportionally, cut the safety protection and remove burrs. Mount observing the crosspieces alignment. Make sure you reinstall the cardan shaft safety protection;
- During operation, rotation must be kept constant at 540 RPM on the PTO. Do not vary the average speed of the tractor during cutting, as this will result in inefficient cutting.
- As per NR 31 Standard, Ordinance 86 dated March 2005 – item 31.12.3, machines, equipment and implements with protected power transmissions must be used;
- We recommend that you do not make abrupt maneuvers with the rotary cutter supported on the ground. Lift it only when needed to divert from possible obstacles, thus avoiding damaging the cardan shaft crosspieces;

## CUTTING HEIGHT ADJUSTMENT

- Cutting height adjustment can be made through the wheel, by changing the position of the pin, lowering the wheel to increase the cutting height or, reversely, to decrease it;
- For models with side height adjustment, adjustment is made through the slider support group by loosening the nuts until the height adjusting locks loose, getting free to operate. Follow the same procedure on the other side so as to achieve symmetry.

## CLUTCH ADJUSTMENT

- The friction clutch provides protection to the transmission system of the tractor and implement. This device is adjusted so that the disc skids only when it encounters an obstacle. Under normal working conditions, if it skids, tighten evenly all the bolts/screws evenly. When suffering an impact without skidding, follow the reverse process.

## CUTTING POSITION (Figure E)

The original factory mounting comes with centralized cutting. To offset, loosen screws and attachments, rotate the box as per drilling, shift shaft and arm sideways and mount the fixing elements.

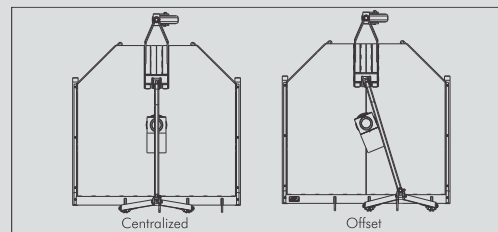


Figure E

## WORKING POSITION: (Figure F)

At work to keep the front mowing higher than its rear, as shown in figure F.

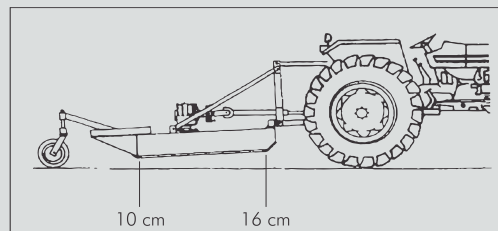


Figure F

## MAINTENANCE

- Check the oil level of the transmission box daily in the level plug located in the front part of the box. Fill it up, if necessary, with SAE 90 oil;
- Clean and lubricate the lubrication points daily or every 8 hours of operation with good-quality grease. (crosspieces, bar, tube and fork shaft);
- Keep the rotary cutter blades always sharp. When undergoing sharpening, do it evenly on both sides not to affect balancing;
- In case a blade breaks or is lost, replace it immediately to avoid vibrations, damages and also to keep good-quality cutting;
- Check daily conditions of screws, nuts, pins. Retighten and replace them if necessary.

## COLOR CHOICE



GREEN



RED



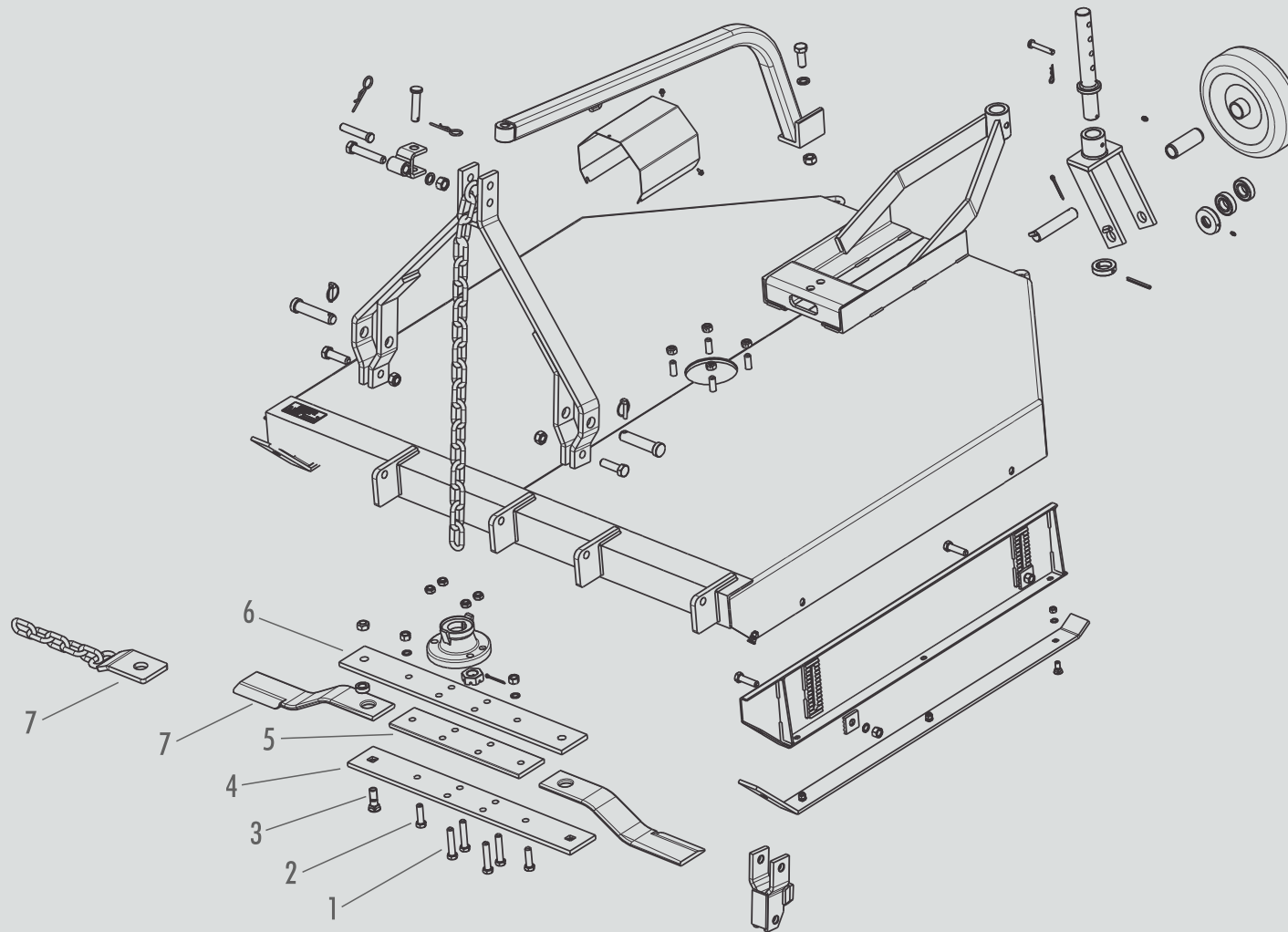
YELLOW



BLUE



# ROTARY CUTTER FRAME - PART 1 (ITEMS 1 TO 7)

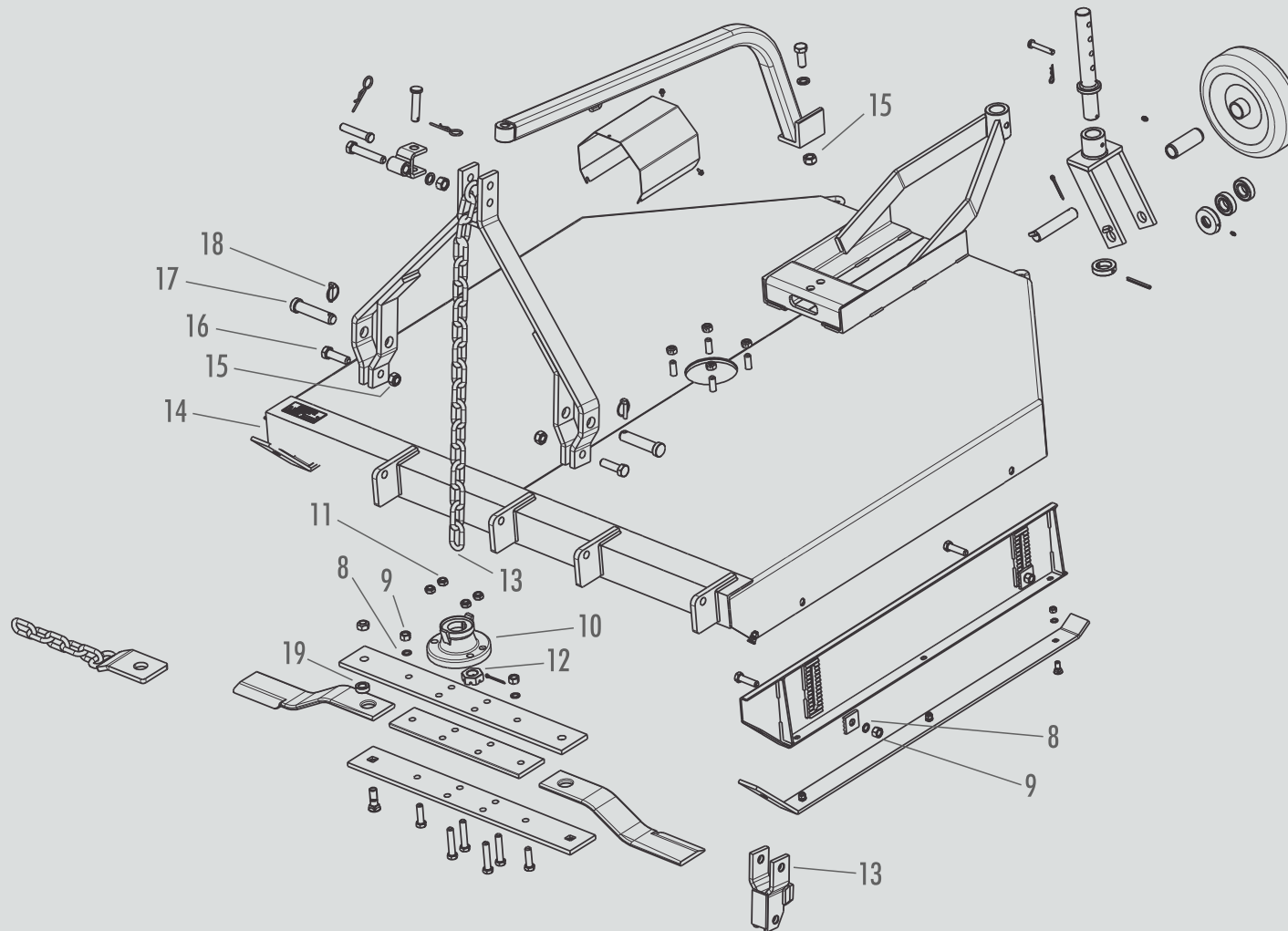




ITEM	CODE	DESCRIPTION	RDMRA 120/1000 WITH HEIGHT ADJUST.	RDMRA 120/1000 WITHOUT HEIGHT ADJUST.	RDMR 120 WITH HEIGHT ADJUST.	RDMR 120 WITHOUT HEIGHT ADJUST.	RDMR 130 WITH HEIGHT ADJUST.	RDMR 130 WITHOUT HEIGHT ADJUST.	RDMR 140/1000 WITH HEIGHT ADJUST.	RDMR 140/1000 WITHOUT HEIGHT ADJUST.	RDMR 140 WITH HEIGHT ADJUST.	RDMR 140 WITHOUT HEIGHT ADJUST.	RDMR 150 WITH HEIGHT ADJUST.	RDMR 150 WITHOUT HEIGHT ADJUST.	RDMR 160 WITH HEIGHT ADJUST.	RDMR 160 WITHOUT HEIGHT ADJUST.	RDMR 170 WITH HEIGHT ADJUST.	RDMR 170 WITHOUT HEIGHT ADJUST.	RDMR 180 WITH HEIGHT ADJUST.	RDMR 180 WITHOUT HEIGHT ADJUST.	RDMR 200 WITH HEIGHT ADJUST.	RDMR 200 WITHOUT HEIGHT ADJUST.
1	0.2404.0041	SCREW M16X80	4	4	4	4	4	4	4	4	4	4	4	4	4	4	4	4	4	4	6	6
2	0.2404.0062	SCREW M16X55	X	X	X	X	X	X	X	X	X	X	2	2	2	2	2	2	2	2	2	2
3	0.2405.0013	SCREW 3/4"X62	2	2	2	2	2	2	2	2	2	2	2	2	2	2	2	2	2	2	2	2
4	3.0020.1040	LOWER BLADE FASTENER	1	1	1	1	X	X	X	X	X	X	X	X	X	X	X	X	X	X	X	X
4	3.0022.1023	LOWER BLADE FASTENER	X	X	X	X	1	1	X	X	X	X	X	X	X	X	X	X	X	X	X	X
4	3.0022.1052	LOWER BLADE FASTENER	X	X	X	X	X	X	1	1	1	1	X	X	X	X	X	X	X	X	X	X
4	3.0023.1029	LOWER BLADE FASTENER	X	X	X	X	X	X	X	X	X	X	1	1	X	X	X	X	X	X	X	X
4	3.0023.1112	LOWER BLADE FASTENER	X	X	X	X	X	X	X	X	X	X	X	X	1	1	X	X	X	X	X	X
4	3.0025.1010	LOWER BLADE FASTENER	X	X	X	X	X	X	X	X	X	X	X	X	X	X	1	1	1	1	1	1
5	3.0020.1039	SPACER	1	1	1	1	X	X	X	X	X	X	X	X	X	X	X	X	X	X	X	X
5	3.0022.1022	SPACER	X	X	X	X	1	1	X	X	X	X	X	X	X	X	X	X	X	X	X	X
5	3.0022.1051	SPACER	X	X	X	X	X	X	1	1	1	1	X	X	X	X	X	X	X	X	X	X
5	3.0023.1028	SPACER	X	X	X	X	X	X	X	X	X	X	1	1	X	X	X	X	X	X	X	X
5	3.0023.1111	SPACER	X	X	X	X	X	X	X	X	X	X	X	X	1	1	X	X	X	X	X	X
5	3.0025.1009	SPACER	X	X	X	X	X	X	X	X	X	X	X	X	X	X	1	1	1	1	1	1
6	3.0020.1038	UPPER BLADE BASTENER	1	1	1	1	X	X	X	X	X	X	X	X	X	X	X	X	X	X	X	X
6	3.0022.1021	UPPER BLADE BASTENER	X	X	X	X	1	1	X	X	X	X	X	X	X	X	X	X	X	X	X	X
6	3.0022.1050	UPPER BLADE BASTENER	X	X	X	X	X	X	1	1	1	1	X	X	X	X	X	X	X	X	X	X
6	3.0023.1027	UPPER BLADE BASTENER	X	X	X	X	X	X	X	X	X	X	1	1	X	X	X	X	X	X	X	X
6	3.0023.1110	UPPER BLADE BASTENER	X	X	X	X	X	X	X	X	X	X	X	X	1	1	X	X	X	X	X	X
6	3.0025.1008	UPPER BLADE BASTENER	X	X	X	X	X	X	X	X	X	X	X	X	X	X	1	1	1	1	1	1
7	2.0020.1013	BLADE	2	2	2	2	X	X	X	X	X	X	X	X	X	X	X	X	X	X	X	X
7	2.0024.1001	BLADE	X	X	X	X	2	2	X	X	X	X	X	X	X	X	X	X	X	X	X	X
7	2.0020.1013	BLADE	X	X	X	X	X	X	2	2	2	2	X	X	X	X	X	X	X	X	X	X
7	2.0024.1002	BLADE	X	X	X	X	X	X	X	X	X	X	2	2	X	X	2	2	X	X	X	X
7	2.0023.1023	BLADE	X	X	X	X	X	X	X	X	X	X	X	X	2	2	X	X	2	2	2	2
7*	5.0020.1108	SUPPORT GROUP WITH CHAIN	2	2	2	2	2	2	2	2	2	2	X	X	X	X	X	X	X	X	X	X
7*	5.0020.1107	SUPPORT GROUP WITH CHAIN	X	X	X	X	X	X	X	X	X	X	2	2	2	2	2	2	2	2	2	2

\* Optional.

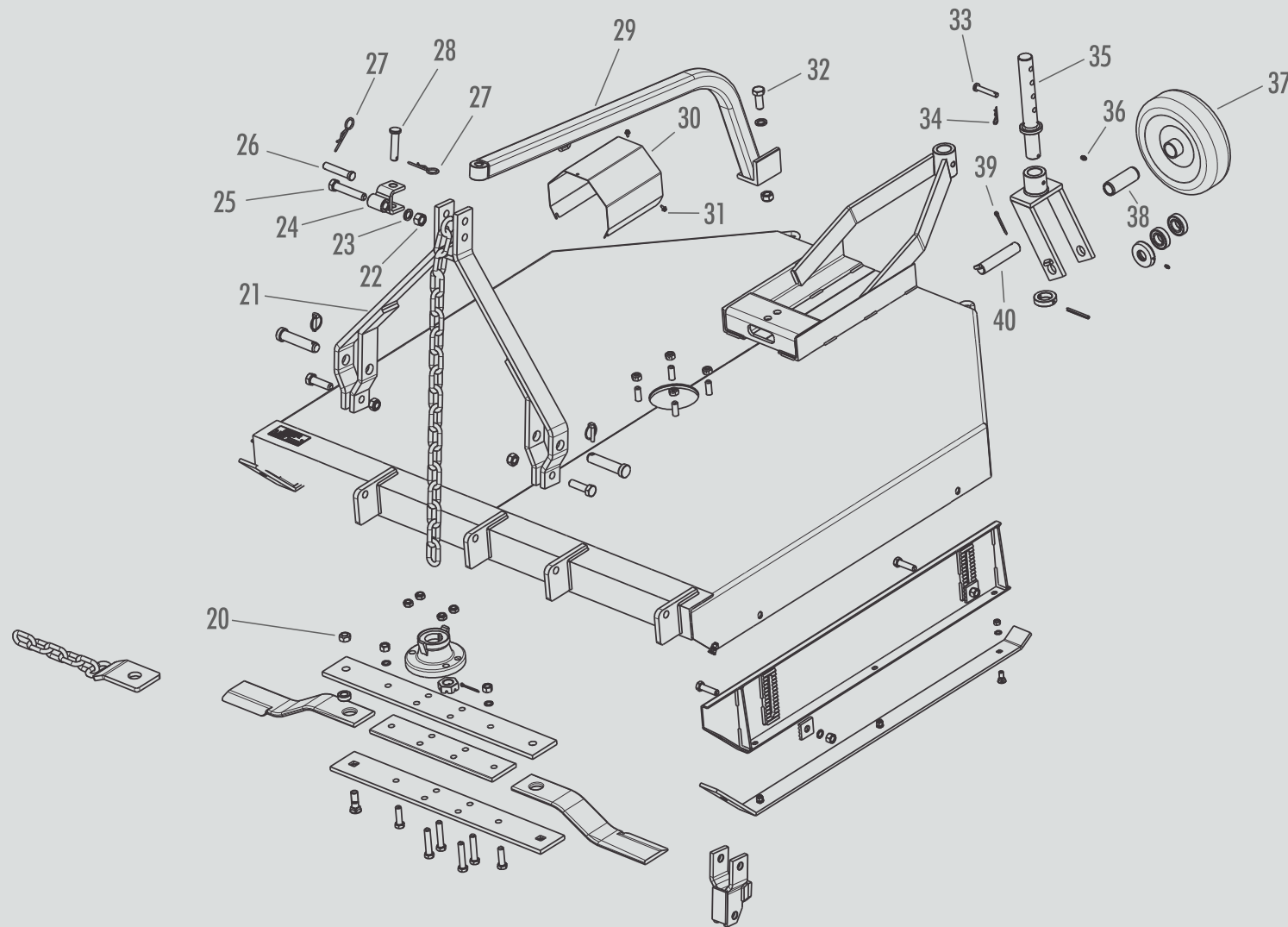
## ROTARY CUTTER FRAME - PART 2 (ITEMS 8 to 19)



ITEM	CODE	DESCRIPTION	RDMRA 120/1000 WITH HEIGHT ADJUST.	RDMRA 120/1000 WITHOUT HEIGHT ADJUST.	RDMR 120 WITH HEIGHT ADJUST.	RDMR 120 WITHOUT HEIGHT ADJUST.	RDMR 130 WITH HEIGHT ADJUST.	RDMR 130 WITHOUT HEIGHT ADJUST.	RDMR 140/1000 WITH HEIGHT ADJUST.	RDMR 140/1000 WITHOUT HEIGHT ADJUST.	RDMR 140 WITH HEIGHT ADJUST.	RDMR 140 WITHOUT HEIGHT ADJUST.	RDMR 150 WITH HEIGHT ADJUST.	RDMR 150 WITHOUT HEIGHT ADJUST.	RDMR 160 WITH HEIGHT ADJUST.	RDMR 160 WITHOUT HEIGHT ADJUST.	RDMR 170 WITH HEIGHT ADJUST.	RDMR 170 WITHOUT HEIGHT ADJUST.	RDMR 180 WITH HEIGHT ADJUST.	RDMR 180 WITHOUT HEIGHT ADJUST.	RDMR 200 WITH HEIGHT ADJUST.	RDMR 200 WITHOUT HEIGHT ADJUST.
8	0.0703.0008	SPRING WASHER M16	X	4	X	4	X	4	X	4	X	4	2	6	2	6	2	6	2	6	2	6
9	0.2304.0004	HEX. NUT . MA16	X	4	X	4	X	4	X	4	X	4	2	6	2	6	2	6	2	6	2	6
10	2.0020.1117	BLADE FIXING SUPPORT	1	1	1	1	1	1	1	1	1	1	X	X	X	X	X	X	X	X	X	X
10	2.0023.1022	BLADE FIXING SUPPORT	X	X	X	X	X	X	X	X	X	X	1	1	1	1	1	1	1	1	X	X
10	2.0026.1037	BLADE FIXING SUPPORT	X	X	X	X	X	X	X	X	X	X	X	X	X	X	X	X	X	X	1	1
11	0.2305.0001	SELF-LOCKING NUT. M16	4	4	4	4	4	4	4	4	4	4	4	4	4	4	4	4	4	4	6	6
12	0.2305.0006	SELF-LOCKIGN NUT M30	1	1	1	1	1	1	1	1	1	1	X	X	X	X	X	X	X	X	X	X
12	0.2301.0004	HEX. NUT MB30X2	X	X	X	X	X	X	X	X	X	X	1	1	1	1	1	1	1	1	1	1
13	0.1301.0003	CHAIN	1	1	1	1	1	1	1	1	1	1	1	1	1	1	1	1	1	1	1	1
13*	5.0002.0026	ARTICULATOR	1	1	1	1	1	1	1	1	1	1	1	1	1	1	1	1	1	1	1	1
14	5.0002.0033	FRAME GROUP WITHOUT HEIGHT ADJUST.	1	X	X	X	X	X	X	X	X	X	X	X	X	X	X	X	X	X	X	X
14	5.0002.0034	FRAME GROUP WITH HEIGHT ADJUST.	X	1	X	X	X	X	X	X	X	X	X	X	X	X	X	X	X	X	X	X
14	5.0002.0031	FRAME GROUP WITHOUT HEIGHT ADJUST.	X	X	1	X	X	X	X	X	X	X	X	X	X	X	X	X	X	X	X	X
14	5.0002.0032	FRAME GROUP WITH HEIGHT ADJUST.	X	X	X	1	X	X	X	X	X	X	X	X	X	X	X	X	X	X	X	X
14	5.0002.2028	FRAME GROUP WITHOUT HEIGHT ADJUST.	X	X	X	X	1	X	X	X	1	X	X	X	X	X	X	X	X	X	X	X
14	5.0002.2029	FRAME GROUP WITH HEIGHT ADJUST.	X	X	X	X	X	1	X	X	X	1	X	X	X	X	X	X	X	X	X	X
14	5.0002.2030	FRAME GROUP WITHOUT HEIGHT ADJUST.	X	X	X	X	X	1	X	X	X	X	X	X	X	X	X	X	X	X	X	X
14	5.0002.2031	FRAME GROUP WITH HEIGHT ADJUST.	X	X	X	X	X	X	1	X	X	X	X	X	X	X	X	X	X	X	X	X
14	5.0002.3033	FRAME GROUP WITHOUT HEIGHT ADJUST.	X	X	X	X	X	X	X	X	X	X	1	X	1	X	X	X	X	X	X	X
14	5.0002.3035	FRAME GROUP WITH HEIGHT ADJUST.	X	X	X	X	X	X	X	X	X	X	1	X	1	X	X	X	X	X	X	X
14	5.0002.5023	FRAME GROUP WITHOUT HEIGHT ADJUST.	X	X	X	X	X	X	X	X	X	X	X	X	X	X	1	X	1	X	X	X
14	5.0002.5024	FRAME GROUP WITH HEIGHT ADJUST.	X	X	X	X	X	X	X	X	X	X	X	X	X	X	X	1	X	1	X	X
14	5.0002.6011	FRAME GROUP WITHOUT HEIGHT ADJUST.	X	X	X	X	X	X	X	X	X	X	X	X	X	X	X	X	X	X	1	X
14	5.0002.6012	FRAME GROUP WITH HEIGHT ADJUST.	X	X	X	X	X	X	X	X	X	X	X	X	X	X	X	X	X	X	X	1
15	0.2305.0002	SELF-LOCKING HEX. NUT. MA20	3	3	3	3	3	3	3	3	3	3	3	3	3	3	3	3	3	3	3	3
16	0.2404.0032	SCREW MA 20 X 70	X	X	X	X	X	X	X	X	X	X	2	2	2	2	2	2	2	2	2	2
17	2.0020.1068	ARM PIN	2	2	X	X	X	X	2	2	X	X	X	X	X	X	X	X	X	X	X	X
17	2.0020.1153	PIN CAT I	X	X	2	2	X	X	X	X	X	X	X	X	X	X	X	X	X	X	X	X
17	2.0020.1152	PIN CAT II	X	X	X	X	2	2	X	X	2	2	X	X	X	X	X	X	X	X	X	X
17	2.0030.1199	WEAR COUPLING PIN	X	X	X	X	X	X	X	X	X	X	2	2	2	2	2	2	2	2	2	2
18	0.2102.0001	LOCK- PIN	2	2	2	2	2	2	2	2	2	2	2	2	2	2	2	2	2	2	2	2
19	2.0020.1165	BLADE BUSHING	2	2	2	2	2	2	2	2	2	2	2	2	2	2	2	2	2	2	2	2

\* Optional.

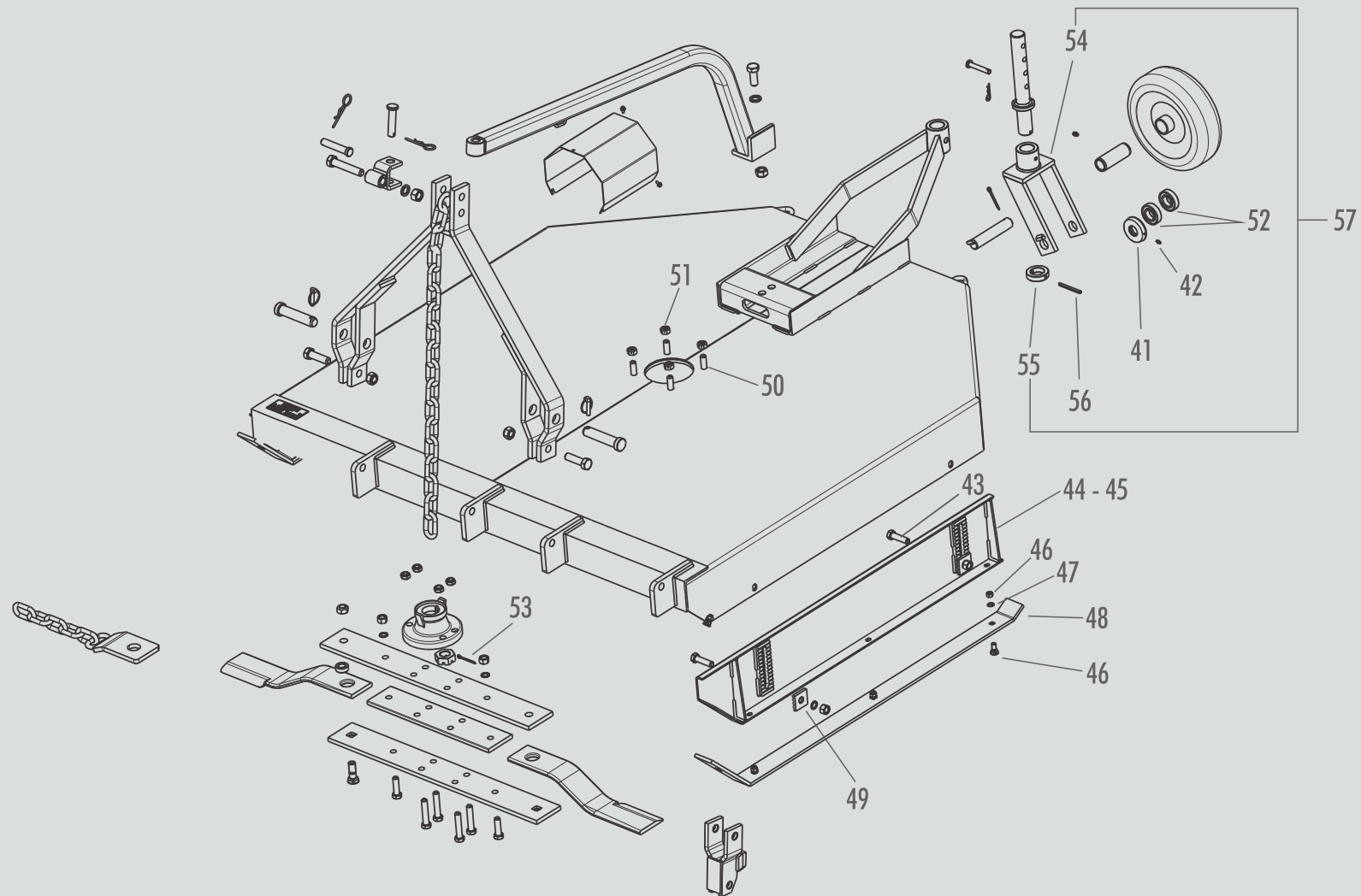
# ROTARY CUTTER FRAME - PART 3 (ITEMS 20 TO 40)



ITEM	CODE	DESCRIPTION	RDMRA 120/1000 WITH HEIGHT ADJUST.	RDMRA 120/1000 WITHOUT HEIGHT ADJUST.	RDMR 120 WITH HEIGHT ADJUST.	RDMR 120 WITHOUT HEIGHT ADJUST.	RDMR 130 WITH HEIGHT ADJUST.	RDMR 130 WITHOUT HEIGHT ADJUST.	RDMR 140/1000 WITH HEIGHT ADJUST.	RDMR 140/1000 WITHOUT HEIGHT ADJUST.	RDMR 140 WITH HEIGHT ADJUST.	RDMR 140 WITHOUT HEIGHT ADJUST.	RDMR 150 WITH HEIGHT ADJUST.	RDMR 150 WITHOUT HEIGHT ADJUST.	RDMR 160 WITH HEIGHT ADJUST.	RDMR 160 WITHOUT HEIGHT ADJUST.	RDMR 170 WITH HEIGHT ADJUST.	RDMR 170 WITHOUT HEIGHT ADJUST.	RDMR 180 WITH HEIGHT ADJUST.	RDMR 180 WITHOUT HEIGHT ADJUST.	RDMR 200 WITH HEIGHT ADJUST.	RDMR 200 WITHOUT HEIGHT ADJUST.
20	0.2304.0010	HEX. NUT. 3/4"	2	2	2	2	2	2	2	2	2	2	2	2	2	2	2	2	2	2	2	2
21	5.0020.0113	ARM GROUP	1	1	X	X	X	X	1	1	X	X	X	X	X	X	X	X	X	X	X	X
21	5.0020.0135	ARM GROUP	X	X	1	1	1	1	X	X	1	1	X	X	X	X	X	X	X	X	X	X
21	5.0023.0142	ARM GROUP	X	X	X	X	X	X	X	X	X	X	1	1	1	1	1	1	1	1	1	1
22	0.2304.0005	HEX. NUT . M20	1	1	1	1	1	1	1	1	1	1	1	1	1	1	1	1	1	1	1	1
23	0.0703.0009	SPRING WASHER M20	2	2	2	2	2	2	2	2	2	2	2	2	2	2	2	2	2	2	2	2
24	5.0023.0143	TOWER U-REINFORCEMENT GROUP	1	1	1	1	1	1	1	1	1	1	1	1	1	1	1	1	1	1	1	1
25	0.2404.0040	SCREW M20 X 110	1	1	1	1	1	1	1	1	1	1	1	1	1	1	1	1	1	1	1	1
26	2.0020.1018	COUPLING PIN	1	1	1	1	1	1	1	1	1	1	1	1	1	1	1	1	1	1	1	1
27	0.1901.0002	CLAMP Ø 4,5 X 83	4	4	2	2	2	2	4	4	2	2	2	2	2	2	2	2	2	2	2	2
28	2.0020.1068	ARM PIN	1	1	1	1	1	1	1	1	1	1	1	1	1	1	1	1	1	1	1	1
29	5.0020.1111	TUBULAR ROD GROUP	1	1	1	1	X	X	X	X	X	X	X	X	X	X	X	X	X	X	X	X
29	5.0022.1111	TUBULAR ROD GROUP	X	X	X	X	1	1	1	1	1	1	X	X	X	X	X	X	X	X	X	X
29	5.0023.0113	TUBULAR ROD GROUP	X	X	X	X	X	X	X	X	X	X	1	1	1	1	X	X	X	X	X	X
29	5.0025.0114	TUBULAR ROD GROUP	X	X	X	X	X	X	X	X	X	X	X	X	X	X	1	1	1	1	X	X
29	5.0026.0114	TUBULAR ROD GROUP	X	X	X	X	X	X	X	X	X	X	X	X	X	X	X	X	X	X	1	1
30	2.0023.1103	CLUTCH PROTECTION	1	1	1	1	1	1	1	1	1	1	1	1	1	1	1	1	1	1	1	1
31	0.2405.0010	FLANGED SCREW. M6X12	3	3	3	3	3	3	3	3	3	3	3	3	3	3	3	3	3	3	3	3
32	0.2404.0030	SCREW M20 X 50	3	3	1	1	1	1	3	3	1	1	1	1	1	1	1	1	1	1	1	1
33	2.0020.1023	WHEEL ADJUSTMENT PIN	1	1	1	1	1	1	1	1	1	1	1	1	1	1	1	1	1	1	1	1
34	0.1901.0003	CLAMP Ø 3 X 55	1	1	1	1	1	1	1	1	1	1	1	1	1	1	1	1	1	1	1	1
35	5.0002.0023	FORK SHAFT GROUP	1	1	1	1	1	1	1	1	1	1	1	1	1	1	1	1	1	1	1	1
36	0.1701.0001	STRAIGHT GREASE FITTING 1/8"	1	1	1	1	1	1	1	1	1	1	1	1	1	1	1	1	1	1	1	1
37	2.0002.0021	WHEEL	1	1	1	1	1	1	1	1	1	1	1	1	1	1	1	1	1	1	X	X
37	2.0002.7022	WHEEL WITH BEARING	X	X	X	X	X	X	X	X	X	X	X	X	X	X	X	X	X	X	1	1
38	2.0020.1071	WHEEL BUSHING	1	1	1	1	1	1	1	1	1	1	1	1	1	1	1	1	1	1	X	X
39	0.1001.0001	COTTERPIN	1	1	1	1	1	1	1	1	1	1	1	1	1	1	1	1	1	1	1	1
40	5.0002.0024	WHEEL SHAFT GROUP	1	1	1	1	1	1	1	1	1	1	1	1	1	1	1	1	1	1	X	X
40	5.0002.7021	WHEEL SHAFT GROUP	X	X	X	X	X	X	X	X	X	X	X	X	X	X	X	X	X	X	1	1

\* Optional.

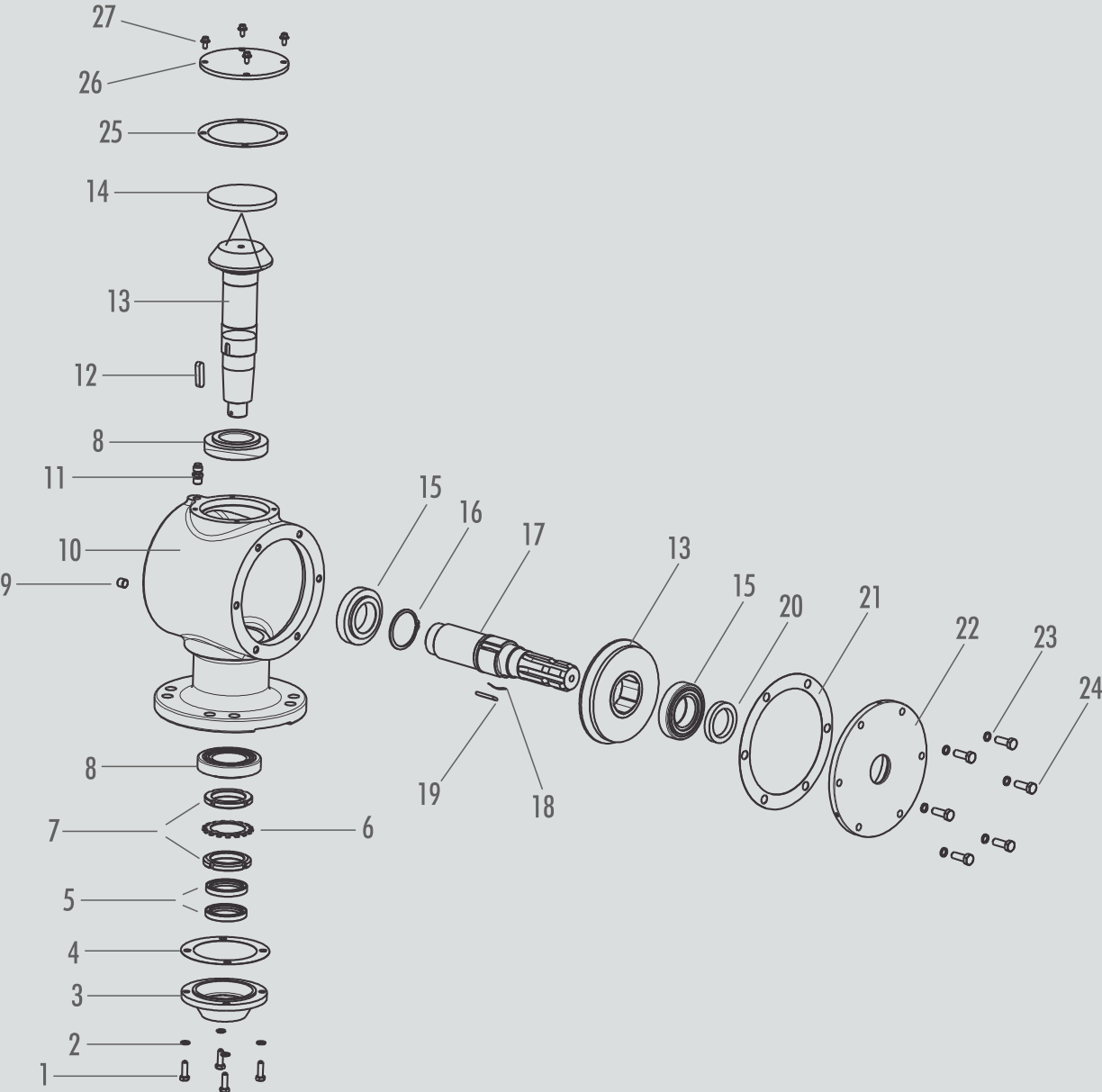
# ROTARY CUTTER FRAME - PART 4 (ITEMS 41 TO 57)



ITEM	CODE	DESCRIPTION	RDMRA 120/1000 WITH HEIGHT ADJUST.	RDMRA 120/1000 WITHOUT HEIGHT ADJUST.	RDMR 120 WITH HEIGHT ADJUST.	RDMR 120 WITHOUT HEIGHT ADJUST.	RDMR 130 WITH HEIGHT ADJUST.	RDMR 130 WITHOUT HEIGHT ADJUST.	RDMR 140/1000 WITH HEIGHT ADJUST.	RDMR 140/1000 WITHOUT HEIGHT ADJUST.	RDMR 140 WITH HEIGHT ADJUST.	RDMR 140 WITHOUT HEIGHT ADJUST.	RDMR 150 WITH HEIGHT ADJUST.	RDMR 150 WITHOUT HEIGHT ADJUST.	RDMR 160 WITH HEIGHT ADJUST.	RDMR 160 WITHOUT HEIGHT ADJUST.	RDMR 170 WITH HEIGHT ADJUST.	RDMR 170 WITHOUT HEIGHT ADJUST.	RDMR 180 WITH HEIGHT ADJUST.	RDMR 180 WITHOUT HEIGHT ADJUST.	RDMR 200 WITH HEIGHT ADJUST.	RDMR 200 WITHOUT HEIGHT ADJUST.
41	3.0027.1189	PROTECTION COVER	X	X	X	X	X	X	X	X	X	X	X	X	X	X	X	X	X	X	1	1
42	0.1701.0002	STRAIGHT GREASE FITTING	X	X	X	X	X	X	X	X	X	X	X	X	X	X	X	X	X	X	1	1
43	0.2404.0058	HEX. SCREW. M16X60	X	4	X	4	X	4	X	4	X	4	X	4	X	4	X	4	X	4	X	4
44	5.0020.0138	SLIDER SUPPORT - LEFT.	X	1	X	1	X	X	X	X	X	X	X	X	X	X	X	X	X	X	X	X
44	5.0022.0101	SLIDER SUPPORT - LEFT.	X	X	X	X	X	1	X	1	X	1	X	X	X	X	X	X	X	X	X	X
44	5.0023.0151	SLIDER SUPPORT - LEFT.	X	X	X	X	X	X	X	X	X	X	1	X	1	X	X	X	X	X	X	X
44	5.0025.0140	SLIDER SUPPORT - LEFT.	X	X	X	X	X	X	X	X	X	X	X	X	X	X	1	X	1	X	X	X
44	5.0026.0115	SLIDER SUPPORT - LEFT.	X	X	X	X	X	X	X	X	X	X	X	X	X	X	X	X	X	X	X	1
45	5.0020.0133	SLIDER SPPORT - RIGHT.	X	1	X	1	X	X	X	X	X	X	X	X	X	X	X	X	X	X	X	X
45	5.0022.0100	SLIDER SPPORT - RIGHT.	X	X	X	X	X	1	X	1	X	1	X	X	X	X	X	X	X	X	X	X
45	5.0023.0135	SLIDER SPPORT - RIGHT.	X	X	X	X	X	X	X	X	X	X	1	X	1	X	X	X	X	X	X	X
45	5.0025.0113	SLIDER SPPORT - RIGHT.	X	X	X	X	X	X	X	X	X	X	X	X	X	X	1	X	1	X	X	X
45	5.0026.0113	SLIDER SPPORT - RIGHT.	X	X	X	X	X	X	X	X	X	X	X	X	X	X	X	X	X	X	X	1
46	0.2405.0001	SCREW 1/2"x1.1/2"	8	8	8	8	8	8	8	8	8	8	8	8	8	8	8	8	8	8	8	8
47	0.0703.0002	SPRING WASHER	8	8	8	8	8	8	8	8	8	8	8	8	8	8	8	8	8	8	8	8
48	3.0020.1110	EXCHANGEABLE SLIDER	2	2	2	2	X	X	X	X	X	X	X	X	X	X	X	X	X	X	X	X
48	3.0022.1036	EXCHANGEABLE SLIDER	X	X	X	X	2	2	2	2	2	2	X	X	X	X	X	X	X	X	X	X
48	3.0023.1075	EXCHANGEABLE SLIDER	X	X	X	X	X	X	X	X	X	2	2	2	2	X	X	X	X	X	X	X
48	3.0025.1040	EXCHANGEABLE SLIDER	X	X	X	X	X	X	X	X	X	X	X	X	X	2	2	2	2	2	X	X
48	3.0026.1021	EXCHANGEABLE SLIDER	X	X	X	X	X	X	X	X	X	X	X	X	X	X	X	X	X	X	2	2
49	2.0023.1081	LOCK WITH HEIGHT ADJUSTMENT	X	4	X	4	X	4	X	4	X	4	X	4	X	4	X	4	X	4	X	4
50	0.2404.0074	HEX. SCREW. MB16X55	4	4	4	4	4	4	4	4	4	4	4	4	4	4	4	4	4	4	4	4
51	0.2303.0004	TORQUE NUT MB16	4	4	4	4	4	4	4	4	4	4	4	4	4	4	4	4	4	4	4	4
52	0.2701.0041	BEARING 62062RS	X	X	X	X	X	X	X	X	X	X	X	X	X	X	X	X	X	X	2	2
53	0.1001.0004	COTTERPIN	1	1	1	1	1	1	1	1	1	1	1	1	1	1	1	1	1	1	1	1
54	5.0002.0022	FORK GROUP	1	1	1	1	1	1	1	1	1	1	1	1	1	1	1	1	1	1	X	X
54	5.0002.7020	FORK GROUP	X	X	X	X	X	X	X	X	X	X	X	X	X	X	X	X	X	X	1	1
55	3.0020.1025	LOWER BUSHING	1	1	1	1	1	1	1	1	1	1	1	1	1	1	1	1	1	1	1	1
56	0.2101.0003	ELASTIC PIN	1	1	1	1	1	1	1	1	1	1	1	1	1	1	1	1	1	1	1	1
57	5.0000.2002	WHEEL ASSY	1	1	1	1	1	1	1	1	1	1	1	1	1	1	1	1	1	1	X	X
57	5.0000.2701	WHEEL ASSY	X	X	X	X	X	X	X	X	X	X	X	X	X	X	X	X	X	X	1	1

\* Optional.

# TRANSMISSION BOX

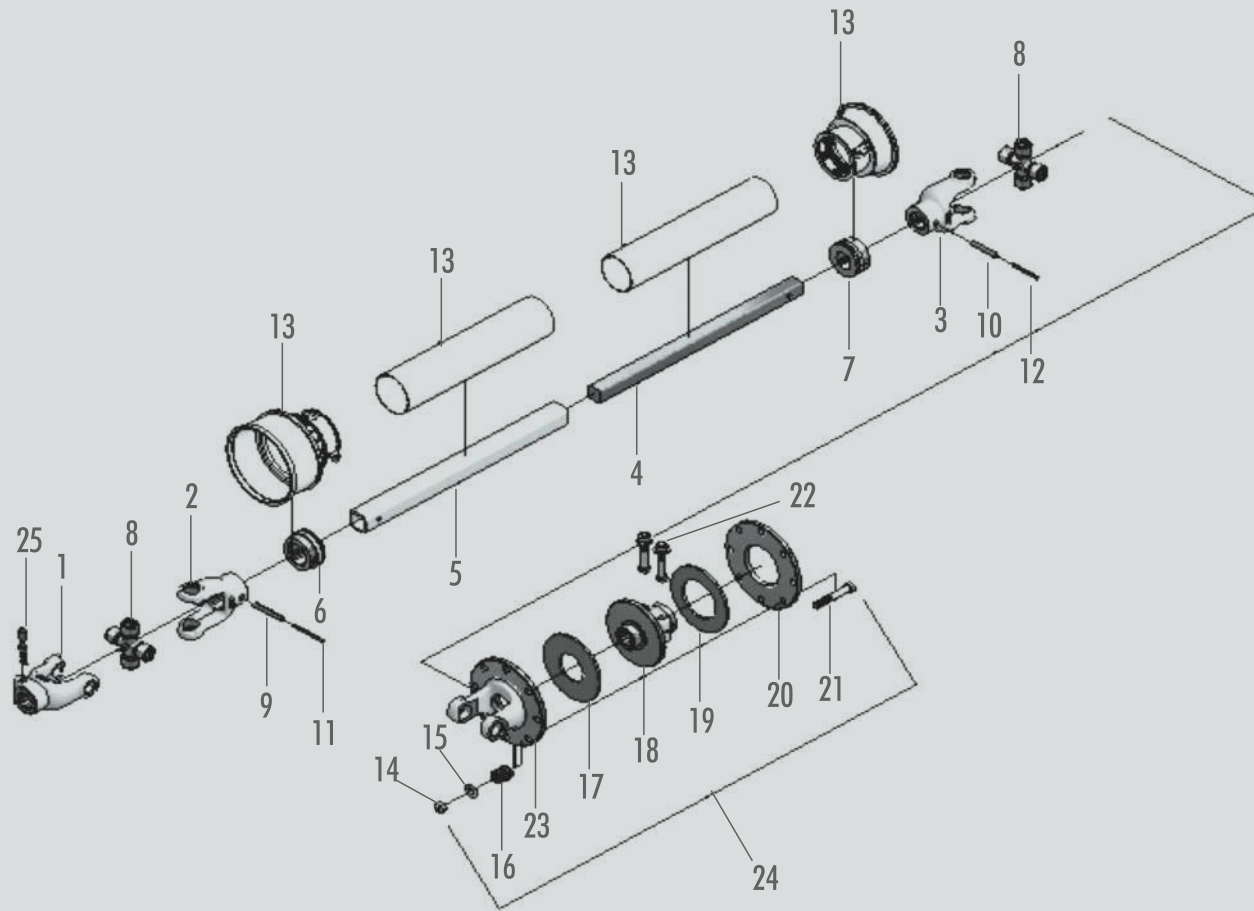




ITEM	CODE	DESCRIPTION	RDMRA 120/1000 RDMR 140/1000	RDMR 120/130/140	RDMR 150/160L	RDMR 160/170/180/200
1	0.2404.0004	HEX. SCREW M8X25	4	4	4	4
2	0.0703.0004	SPRING WASHER	4	4	4	4
3	2.1132.1014	HEAD COVER	1	1	X	X
3	3.1120.1003	HEAD COVER	X	X	1	1
4	2.1124.1010	GASKET	1	1	X	X
4	2.0030.1190	GASKET	X	X	1	1
5	0.2601.0036	RETAINER 01707	2	2	X	X
5	0.2601.0021	RETAINER 01783	X	X	2	2
6	0.0704.0003	WASHER SKF MB 9	1	1	X	X
6	0.0704.0005	WASHER SKF MB 11	X	X	1	1
7	0.2306.0003	NUT SKF KM 9	2	2	X	X
7	0.2306.0005	NUT SKF KM 11	X	X	2	2
8	0.2702.0005	BEARING 30209	2	2	X	X
8	0.2702.0007	BEARING 30211	X	X	2	2
9	0.2801.0011	PLUG 1/4" NPT	1	1	1	1
10	3.1132.1058	HOUSING	1	X	X	X
10	3.1132.1037	HOUSING	X	1	X	X
10	3.1132.1041	HOUSING	X	X	1	X
10	3.1120.1023	HOUSING	X	X	X	1
11	0.0901.0009	BREATHER 1/4" NPT	1	1	1	1
12	0.1101.0021	KEY 10X08X40	1	1	1	1
13	6.0011.3213	CROWN/PINION ASSY 20/20	1	X	X	X
13	6.0011.3208	CROWN/PINION ASSY 21/11	X	1	X	X
13	6.0011.3212	CROWN/PINION ASSY19/10	X	X	1	X
13	6.0011.2012	CROWN/PINION ASSY 21/11	X	X	X	1
14	0.2602.0001	CLOSED RETAINER	1	1	X	X
14	0.2602.0002	CLOSED RETAINER	X	X	1	1
15	0.2702.0004	BEARING 30208	2	2	2	X
15	0.2702.0006	BEARING 30210	X	X	X	2

ITEM	CODE	DESCRIPTION	RDMRA 120/1000 RDMR 140/1000	RDMR 120/130/140	RDMR 150/160L	RDMR 160/170/180/200
16	0.0401.0004	ELASTIC RING 50	1	1	1	X
16	0.0401.0006	ELASTIC RING DAE 60	X	X	X	1
17	3.1132.1052	CROWN SHAFT	1	X	X	X
17	3.1132.1035	CROWN SHAFT	X	1	X	X
17	3.1132.1045	CROWN SHAFT	X	X	1	X
17	3.1120.1015	CROWN SHAFT	X	X	X	1
18	2.1120.1021	FLAT SPRING	3	3	3	3
19	2.1120.1022	COUPLING KEY	3	3	3	3
20	0.2601.0012	RETAINER 01004	1	1	1	X
20	0.2601.0004	RETAINER 00359	X	X	X	1
21	2.1132.1010	GASKET	1	1	X	X
21	2.1033.1004	GASKET	X	X	1	X
21	2.1040.1013	GASKET	X	X	X	1
22	2.1132.1009	COVER – OPEN	1	1	X	X
22	2.1125.1002	COVER – OPEN	X	X	1	X
22	3.1120.1024	COVER – OPEN	X	X	X	1
23	0.0703.0005	SPRING WASHER M10	4	4	6	6
24	0.2404.0008	SCREW M10X30	4	4	6	6
25	2.1008.1018	GASKET	1	1	X	X
25	2.0036.1091	GASKET	X	X	1	1
26	2.1132.1008	UPPER COVER	1	X	X	X
26	2.1132.1060	UPPER COVER	X	1	X	X
26	2.1132.1004	UPPER COVER	X	X	1	1
27	0.2405.0010	FLANGED SCREW M6X12	4	4	4	4
28	5.0511.3216	TRANSMISSION BOX	1	X	X	X
28	5.0511.3211	TRANSMISSION BOX	X	1	X	X
28	5.0511.3215	TRANSMISSION BOX	X	X	1	X
28	5.0511.2005	TRANSMISSION BOX	X	X	X	1

# CLUTCH AND CARDAN SHAFT WITH PROTECTION



ITEM	CODE	DESCRIPTION	RDMRA 120/1000 RDMR 140/1000	RDMR 120/130/140 150/160L/140-1000 RDMRA 120/1000	RDMR 160/170/180/200
1	2.0060.1127	QUICK-COUPLING TERMINAL (Z6 – 1 3/8")	X	1	X
1	2.0060.1118	QUICK-COUPLING TERMINAL (Z21 ESTRIAS)	1	X	X
1	2.0060.1107	QUICK-COUPLING TERMINAL (Z6 – 1 3/8")	X	X	1
2	2.0060.1128	SQUARE-HOLE TERMINAL – FEMALE	1	1	X
2	2.0060.1108	SQUARE-HOLE TERMINAL – FEMALE	X	X	1
3	2.0060.1129	SQUARE-HOLE TERMINAL – MALE	1	1	X
3	2.0060.1111	SQUARE-HOLE TERMINAL – MALE	X	X	1
4	2.0060.1105	SQUARE BAR – MALE	1	1	X
4	2.0060.1133	SQUARE BAR – MALE	X	X	1
5	2.0060.1104	SQAURE TUBE – FEMALE	1	1	X
5	2.0060.1134	SQAURE TUBE – FEMALE	X	X	1
6	2.0060.1130	ADAPTER BUSHING – FEMALE/MALE	1	1	X
7	2.0060.1123	ADAPTER BUSHING – MALE	1	1	X
8	0.3901.0009	CROSSPIECE – WITH LOCK RING	2	2	X
8	0.3901.0004	CROSSPIECE – WITH LOCK RING	X	X	2
9	0.2101.0022	ELASTIC PIN 10 X 65	1	1	X
9	0.2101.0024	ELASTIC PIN 10 X 85	X	X	1
10	0.2101.0022	ELASTIC PIN 10 X 65	1	1	X
10	0.2101.0006	ELASTIC PIN 10 X 75	X	X	1
11	0.2101.0016	ELASTIC PIN 06 X 65	1	1	X
11	0.2101.0019	ELASTIC PIN 06 X 85	X	X	1
12	0.2101.0016	ELASTIC PIN 06 X 65	1	1	X
12	0.2101.0018	ELASTIC PIN 06 X 75	X	X	1

ITEM	CODE	DESCRIPTION	RDMRA 120/1000 RDMR 140/1000	RDMR 120/130/140 150/160L/140-1000 RDMRA 120/1000	RDMR 160/170/180/200
13	2.0060.1124	COMPLETE PROTECTION ASSY	1	1	1
14	0.2305.0016	SELF-LOCKING NUT BSW 1/2" 12FPP	8	8	8
15	0.0702.0006	FLAT WASHER - 1/2" X 24,0 X 3,0 MM	8	8	8
16	0.2001.0002	SPRING - 30,0 X 35,0 MM IN DIAMETER - WIRE 8,0 MM	8	8	8
17	0.0601.0004	PROTECTION DISC - 139,0 X 59,0 X 5,0 MM	1	1	1
18	2.0060.1141	GROOVED CORE WITH LATERAL GRIP (Z6 – 1 3/8")	1	1	X
18	2.0060.1143	GROOVED CORE WITH LATERAL GRIP (Z6 – 1 3/4")	X	X	1
19	0.0601.0010	FRICTION DISC - 139,0 X 82,0 X 5,0 MM	1	1	X
19	0.0601.0005	FRICTION DISC - 139,0 X 97,0 X 5,0 MM	X	X	1
20	0.0601.0011	IRON DISC - 180 X 85 X 3/8" IN DIAMETER	1	1	X
20	0.0601.0006	IRON DISC - 180 X 98 X 3/8" IN DIAMETER	X	X	1
21	0.2403.0007	HEX. SCREW BSW.RP 1/2" X 3 1/2"	8	8	8
22	2.0060.1132	LATERAL TIGHTENING ASSY (WAHSE, SCREW, NUT)	2	2	X
22	2.0060.1126	LATERAL TIGHTENING ASSY (WASHER, SCREW, NUT)	X	X	2
23	2.0060.1142	CLUTCH FLANGE – SERIES 2000	1	1	X
23	2.0060.1135	CLUTCH FLANGE – SERIES 5000	X	X	1
24	5.0600.1515	COMPLETE CLUTCH	1	1	X
24	5.0600.1516	COMPLETE CLUTCH	X	X	1
25	2.0060.1101	QUICK-COUPLING ASSY (PIN AND SPRING)	1	1	1
26	0.1601.0003	CARDAN SHAFT	1	1	X
26	0.1602.0017	CARDAN SHAFT	X	X	1
26*	0.1601.0004	CARDAN SHAFT WITH 21 GROOVES (OPTIONAL)	1	X	X

\*OPTIONAL P/ RDMRA 120/1000 RDMR 140/1000



UM BRAÇO FORTE NA SUA TERRA

+ 55 54 3213 8800 | BR. 116 / KM 153,2 - Bairro Panazzolo - 95080-050 - Caxias do Sul /RS - Brazil  
vendas@mec-rul.com.br | rugeri@mec-rul.com.br | www.mec-rul.com.br



ROTARY CUTTER MANUAL  
RDMR 120 / 130 / 140 / 150 / 160L / 160P / 170 / 180 / 200  
RDMRA 120 / 1000  
RDMR 140 / 1000