

USER'S MANUAL AND SPARE PARTS CATALOGUE



SUBSOILER
SMR 70/3 | 160/5 | 170/5 | 170/7 | 190/5
190/7 | 190/9 | 200/7 | 200/9



AGRICULTURAL REAR PLANER
PTMR 130 | 150 | 190 | 200 | 230 | 240



TRACTOR REAR SHOVEL
PAMR 220



AGRICULTURAL WINCH
GAMR

Review: A
Date: 01/03/2016
Code: 0.4101.0036

CONTENTS

PAGE 04

- Safety Instructions
- Maintenance
- Operating Instructions
- Important
- Warranty Term
- Spare Parts
- Versions into other Languages
- Color Choice

SUBSOILER

PAGE 05

- Technical Features

PAGE 06

- Frame

PAGE 08

- Wheel Assy

AGRICULTURAL REAR PLANER

PAGE 09

- Technical Features
- Adjustments and Operations

PAGE 11

- Frame

TRACTOR REAR SHOVEL

PAGE 12

- Technical Features
- Adjustments

PAGE 13

- Frame

AGRICULTURAL WINCH

PAGE 14

- Technical Features
- Adjustments

PAGE 15

- Frame

SAFETY INSTRUCTIONS

- 1) Carefully read all instructions and get familiar with all information herein contained;
- 2) Do not allow untrained people to operate the equipment, as accidents may happen;
- 3) Do not allow children to play nearby the equipment or over it when the equipment is operating, being transported or even stored;
 - Wear personal protection equipment;
 - Wear suitable clothing and footwear. Do not wear loose-fitting clothing or chains etc. as they may get caught in the moving parts of the equipment.
- 4) Only the operator is allowed on the tractor while it is operating in the field or while it is being transported;
- 5) Do not allow people near the working area of the equipment;
- 6) Get very familiar with the terrain you are going to work before operating the equipment. Demarcate dangerous places or places with obstacles. We do not recommend that you operate the equipment in stony terrain;
- 7) Use speed that is suitable with the terrain conditions;
- 8) Be careful when hitching the equipment to the tractor or unhitching it from the tractor in the farm or shed. Always do it on level and compact ground. Be sure the equipment is properly supported;
- 9) Always stop the engine and apply the brakes before leaving the operator's seat;
- 10) Check carefully the transport width in narrow places;
- 11) Do not overhaul the equipment or carry it while the PTO is ON.

MAINTENANCE

Check daily the conditions of screws, nuts, and fixing pins. If necessary retighten or replace them.

OPERATING INSTRUCTIONS

- Hitch the equipment to the three points of the tractors.
- Place the lower arms coupling pins and locks.
- Use the third point of the tractor with the respective pins.
- After coupling the equipment to the tractor, centralize and level.

IMPORTANT:

As per NR 31 Standard, Ordinance 86 dated March 3, 2005 – item 31.12.3, machines, equipment and implements with protected power transmissions must be used.

WARRANTY TERM

Mec-Rul warrants its products for any defects in its material and craftsmanship for a period of 180 days counted from the shipment date (bill of lading). The warranty covers the replacement of any part or original accessory and product component - after evaluated by the technicians and examined by Rugeri Mec-Rul S/A or the manufacturer of the part or accessory that proves no misapplication of it. The warranty also does not cover perishable materials, these ones considered with predictable replacement or wear out by constant use and friction with its ground application.

SPARE PARTS

When ordering spare parts, please indicate the number and code of the part, as described in the catalogue. Whenever possible, please inform also the Equipment Number, which is engraved on the machine chassis.

TRANSLATION INTO OTHER LANGUAGES

Para versões em português e espanhol desse material, acesse www.mec-rul.com.br
For Portuguese and Spanish versions of this guide, visit www.mec-rul.com.br
Para versiones en portugués y español de este manual, visite www.mec-rul.com.br

COLOR CHOICE



GREEN



RED



YELLOW



BLUE

MEC-RUL reserves the right to modify the technical specifications of its products without prior notice and with no obligation to modify products that have already been sold.

SUBSOILER

TECHNICAL FEATURES

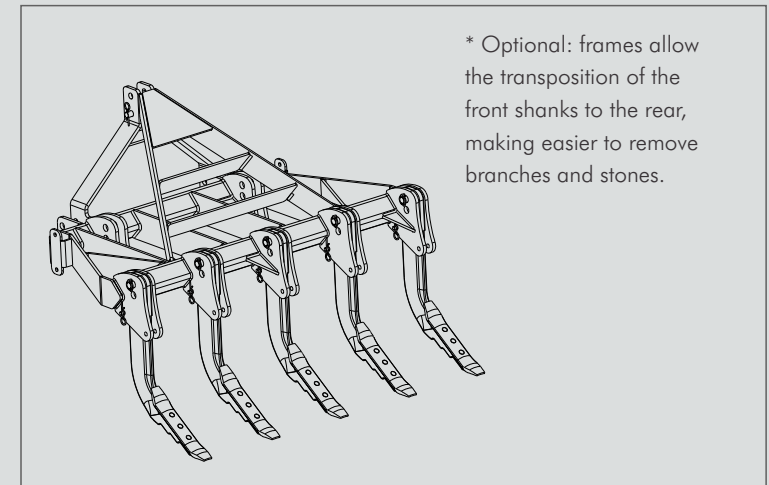
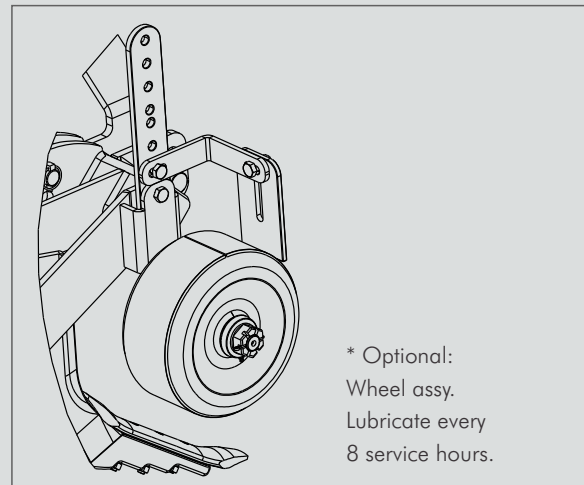
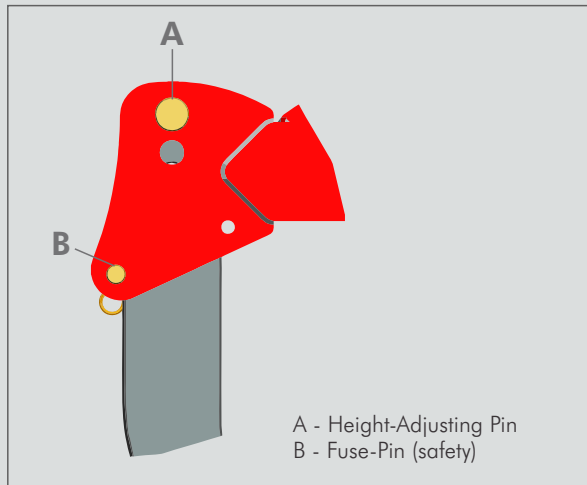
DESCRIPTION		SMR-70/3	SMR-160/5	SMR-170/5	SMR-170/7	SMR-190/5	SMR-190/7	SMR-190/9	SMR-200/7	SMR-200/9
NO. OF RODS		3	5	5	7	5	7	9	7	9
OVERALL WIDTH		0,94 m	1,62 m	1,72 m	1,72 m	1,92 m	1,92 m	1,92 m	2,02 m	2,02 m
CUTTING WIDTH		0,700 m	1,60 m	1,70 m	1,70 m	1,90 m	1,90 m	1,90 m	2,00 m	2,00 m
MAX. DEPTH		0,58 m	0,58 m	0,58 m	0,58 m	0,58 m	0,58 m	0,58 m	0,58 m	0,58 m
AVERAGE		251 kg	326 kg	365 kg	455 kg	370 kg	430 kg	525 kg	526kg	575 kg
ROD SPACING		311 mm	380 mm	405 mm	270 mm	455 mm	304 mm	228 mm	320 mm	240 mm
POWER	SUPERFICIAL	40-45 hp	55-60 hp	55-60 hp	65-70 hp	55-60 hp	65-70 hp	90-105 hp	65-70 hp	90-105 hp
	DEEP	55-65 hp	65-75 hp	65-75 hp	75-90 hp	65-75 hp	75-90 hp	115-130 hp	75-90 hp	115-130 hp

The MEC-Rul subsoiler is designed to break up the compacted layers of soil, allowing for water infiltration and root development.

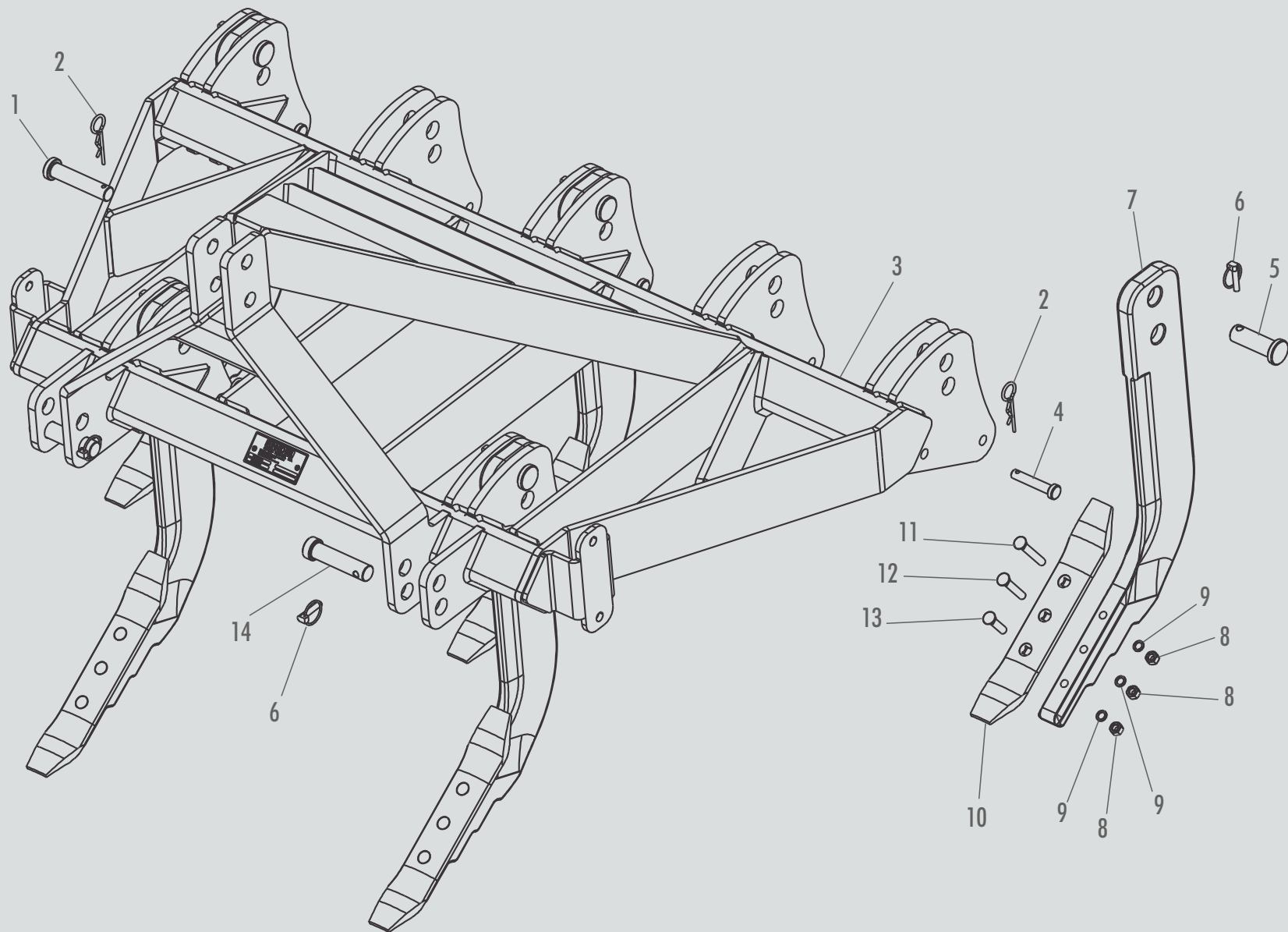
Makes the work of rotary hoes easier.

Cast iron shanks with reversible points in special steel.

Shank disarming system with fuse-pins.

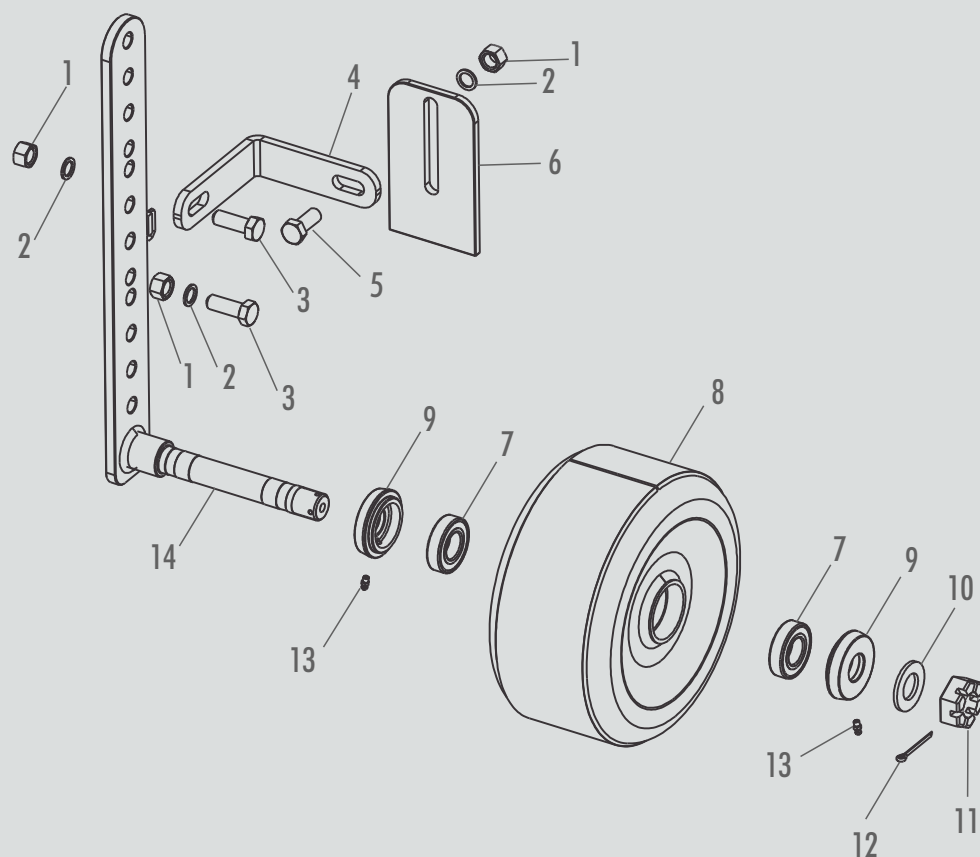


SUBSOILER



ITEM	CODE	NAME	SMR 70/3 WITHOUT DEVICE TO RECEIVE OTHER EQUIPMENT	SMR 70/3 WITH DEVICE TO RECEIVE OTHER EQUIPMENT	SMR 160/5 WITHOUT DEVICE TO RECEIVE OTHER EQUIPMENT	SMR 160/5 WITH DEVICE TO RECEIVE OTHER EQUIPMENT	SMR 170/5 WITHOUT DEVICE TO RECEIVE OTHER EQUIPMENT	SMR 170/5 WITH DEVICE TO RECEIVE OTHER EQUIPMENT	SMR 170/7 WITHOUT DEVICE TO RECEIVE OTHER EQUIPMENT	SMR 170/7 WITH DEVICE TO RECEIVE OTHER EQUIPMENT	SMR 190/5 WITHOUT DEVICE TO RECEIVE OTHER EQUIPMENT	SMR 190/5 WITH DEVICE TO RECEIVE OTHER EQUIPMENT	SMR 190/7 WITHOUT DEVICE TO RECEIVE OTHER EQUIPMENT	SMR 190/7 WITH DEVICE TO RECEIVE OTHER EQUIPMENT	SMR 190/9 WITHOUT DEVICE TO RECEIVE OTHER EQUIPMENT	SMR 190/9 WITH DEVICE TO RECEIVE OTHER EQUIPMENT	SMR 200/7 WITHOUT DEVICE TO RECEIVE OTHER EQUIPMENT	SMR 200/7 WITH DEVICE TO RECEIVE OTHER EQUIPMENT	SMR 200/9 WITHOUT DEVICE TO RECEIVE OTHER EQUIPMENT	SMR 200/9 WITH DEVICE TO RECEIVE OTHER EQUIPMENT
1	2.0053.1075	THIRD-POINT HITCHING PIN	1	1	1	1	1	1	1	1	1	1	1	1	1	1	1	1	1	1
2	0.1901.0002	FIXING CLAMP Ø 4.5X103	4	4	6	6	6	6	8	6	8	10	10	10	10	10	10	10	10	10
3	5.0005.4025	CHASSIS WITHOUT DEVICE - 70/3	1	X	X	X	X	X	X	X	X	X	X	X	X	X	X	X	X	X
3	5.0005.4019	CHASSIS WITH DEVICE - 170/3	X	1	X	X	X	X	X	X	X	X	X	X	X	X	X	X	X	X
3	5.0005.4008	CHASSIS WITHOUT DEVICE - 160/5	X	X	1	X	X	X	X	X	X	X	X	X	X	X	X	X	X	X
3	5.0005.4007	CHASSIS WITH DEVICE - 160/5	X	X	X	1	X	X	X	X	X	X	X	X	X	X	X	X	X	X
3	5.0005.4015	CHASSIS WITHOUT DEVICE - 170/5	X	X	X	X	1	X	X	X	X	X	X	X	X	X	X	X	X	X
3	5.0005.4024	CHASSIS WITH DEVICE - 170/5	X	X	X	X	X	1	X	X	X	X	X	X	X	X	X	X	X	X
3	5.0005.4022	CHASSIS WITHOUT DEVICE - 170/7	X	X	X	X	X	X	1	X	X	X	X	X	X	X	X	X	X	X
3	5.0005.4014	CHASSIS WITH DEVICE - 170/7	X	X	X	X	X	X	1	X	X	X	X	X	X	X	X	X	X	X
3	5.0005.4026	CHASSIS WITHOUT DEVICE - 190/5	X	X	X	X	X	X	X	1	X	X	X	X	X	X	X	X	X	X
3	5.0005.4018	CHASSIS WITH DEVICE - 190/5	X	X	X	X	X	X	X	X	1	X	X	X	X	X	X	X	X	X
3	5.0005.4020	CHASSIS WITHOUT DEVICE - 190/7	X	X	X	X	X	X	X	X	X	1	X	X	X	X	X	X	X	X
3	5.0005.4012	CHASSIS WITH DEVICE - 190/7	X	X	X	X	X	X	X	X	X	X	1	X	X	X	X	X	X	X
3	5.0005.4021	CHASSIS WITHOUT DEVICE - 190/9	X	X	X	X	X	X	X	X	X	X	X	1	X	X	X	X	X	X
3	5.0005.4016	CHASSIS WITH DEVICE - 190/9	X	X	X	X	X	X	X	X	X	X	X	X	1	X	X	X	X	X
3	5.0005.4028	CHASSIS WITHOUT DEVICE 200/7	X	X	X	X	X	X	X	X	X	X	X	X	X	1	X	X	X	X
3	5.0005.4027	CHASSIS WITH DEVICE - 200/7	X	X	X	X	X	X	X	X	X	X	X	X	X	X	1	X	X	X
3	5.0005.4023	CHASSIS WITHOUT DEVICE 200/9	X	X	X	X	X	X	X	X	X	X	X	X	X	X	X	1	X	X
3	5.0005.4017	CHASSIS WITH DEVICE - 200/9	X	X	X	X	X	X	X	X	X	X	X	X	X	X	X	X	1	X
4	3.0054.1036	SHANK FUSE-PIN	6	6	10	10	10	10	14	14	10	10	14	14	18	18	14	14	18	18
5	3.0054.1035	SHANK FIXING PIN	3	3	5	5	5	5	7	7	5	5	7	7	9	9	7	7	9	9
6	0.2102.0001	LOCK PIN	5	5	7	7	7	7	9	7	9	7	9	9	11	11	9	9	11	11
7	2.0054.1060	SUBSOILER SHANK	3	3	5	5	5	5	7	7	5	5	7	7	9	9	7	7	9	9
8	0.2302.0001	HEX. NUT . NC ½" - 13	9	9	15	15	15	15	21	21	15	15	21	21	27	27	21	21	27	27
9	0.0703.0002	SPRING WASHER ½" - HEAVY	9	9	15	15	15	15	21	21	15	15	21	21	27	27	21	21	27	27
10	2.0053.1044	SHANK POINT	3	3	5	5	5	5	7	7	5	5	7	7	9	9	7	7	9	9
11	0.2405.0008	PLOW SCREW 1/2" X 3 1/2"	3	3	5	5	5	5	7	7	5	5	7	7	9	9	7	7	9	9
12	0.2405.0007	PLOW SCREW 1/2" X 3"	3	3	5	5	5	5	7	7	5	5	7	7	9	9	7	7	9	9
13	0.2405.0006	PLOW SCREW 1/2" X 2 ¼"	3	2	5	5	5	5	7	7	5	5	7	7	9	9	7	7	9	9
14	2.0053.1074	2ND-POINT HITCHING PIN	2	2	2	2	2	2	2	2	2	2	2	2	2	2	2	2	2	2

WHEEL ASSY *OPTIONAL



ITEM	CODE	NAME	SMR-70/3	SMR-160/5	SMR-170/5	SMR-170/7	SMR-190/5	SMR-190/7	SMR-190/9	SMR-200/7	SMR-200/9
1	0.2304.0004	HEX. NUT . M16	X	X	4	X	X	X	4	X	X
2	0.0703.0008	SPRING WASHER M16	X	X	4	X	X	X	4	X	X
3	0.2404.0077	HEX. SCREW M16X45	X	X	3	X	X	X	3	X	X
4	5.0005.4010	GROUP FIXING "L"	X	X	1	X	X	X	1	X	X
5	0.2404.0076	HEX. SCREW . M16X40	X	X	1	X	X	X	1	X	X
6	2.0054.1075	WHEEL CLENG SHEET	X	X	1	X	X	X	1	X	X
7	0.2701.0041	BEARING 6206-2 RS	X	X	2	X	X	X	2	X	X
8	2.0054.1101	SUBSOILER WHEEL	X	X	1	X	X	X	1	X	X
9	3.0027.1189	WHEEL PROTECTION COVER	X	X	2	X	X	X	2	X	X
10	2.0030.1225	SEALING WASHER	X	X	1	X	X	X	1	X	X
11	0.2301.0004	HEX. NUT . 2" X MB 30X2	X	X	1	X	X	X	1	X	X
12	0.1001.0004	COTTERPIN	X	X	1	X	X	X	1	X	X
13	0.1701.0002	GREASE FITTING 1/4" - UNF-18	X	X	2	X	X	X	2	X	X
14	5.0005.4009	WHEEL SUPPORT GROUP	X	X	1	X	X	X	1	X	X

TRACTOR REAR PLANER

TECHNICAL FEATURES

DESCRIPTION	PTMR 130*	PTMR 150	PTMR 190	PTMR 200	PTMR 230	PTMR 240
LENGTH	1170 mm	1170 mm	1170 mm	1170 mm	1532 mm	1532 mm
BLADE WIDTH	1300 mm	1500 mm	1900 mm	2000 mm	2300 mm	2400 mm
BLADE HEIGHT	330 mm	400 mm	400 mm	400 mm	400 mm	400 mm
POWER	25 – 30 hp	40 – 50 hp	45 – 50 hp	45 – 50 hp	70 – 80 hp	70 – 100 hp
VERTICAL TILT	0° - 12° - 24°	0° - 12° - 24°	0° - 12° - 24°	0° - 12° - 24°	0° - 12° - 24°	0° - 12° - 24°
HORIZONTAL TILT	0° - 20° - 40° - 180°	0° - 20° - 40° - 180°	0° - 20° - 40° - 180°	0° - 20° - 40° - 180°	0° - 20° - 40° - 180°	0° - 20° - 40° - 180°
APPROX. WEIGHT	237 Kg	245 Kg	265 Kg	275 Kg	310 Kg	320 Kg

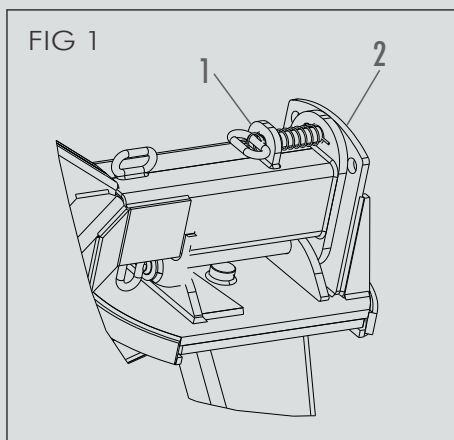
*CAT. I and II

The Mec-Rul Tractor Rear Planer is fitted with a practical and fast horizontal and vertical adjusting system. Designed to open irrigation canals, small embankments, maintenance of roads, contour lines, and others. Reverse system allows it to operate in reverse gear.

ADJUSTMENTS AND OPERATIONS

DEPTH ADJUSTMENT

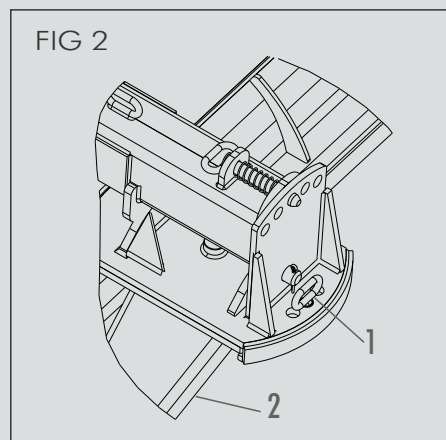
1 – The depth of the Tractor Rear Planer is adjusted by means of the lever of the tractor's hydraulic lifting system.



VERTICAL ADJUSTMENT

2 – To carry out vertical adjustment, pull the pin (item 1, figure 1) and rotate the reverser (item 2) up to the desired position.

3 – The reverser orifice allows vertical adjustment at 0, 12, 24 degrees left or right.



HORIZONTAL ADJUSTMENT

4 – To carry out horizontal adjustment, remove the pin (item 1, figure 2) and rotate the reverser (item 2) up to the desired position. Reposition the pin.

5 – The reverser orifices allow horizontal adjustments at 0, 20 and 40 degrees (half turn) to the left or right.

OPERATIONS

1 - Figure 03 shows the Tractor Rear Planer in the vertical position for works such as:

- Level curve;
- Opening of canals;
- Shallow ditches, etc.

2 - The operating conditions will determine which is the best angle at which the planer should operate. Increasing the angle will increase the soil resistance in the blade, therefore, adjust at an angle that is sufficient to move the soil without much resistance.

3 - The blade can be mounted laterally, approximately 300 mm to the left or right, for jobs such as fences, walls, trees, etc. To do this, loosen the nuts securing the planer in the reverser and place it to the desired position..

FIGURE 03

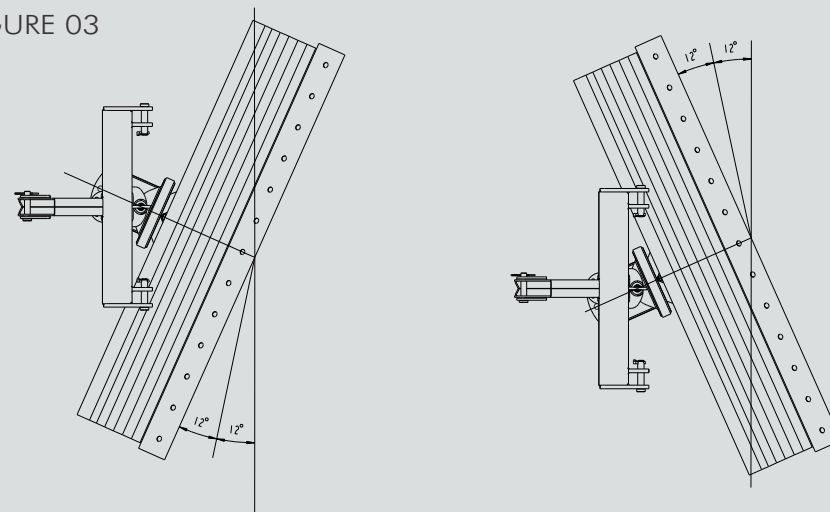
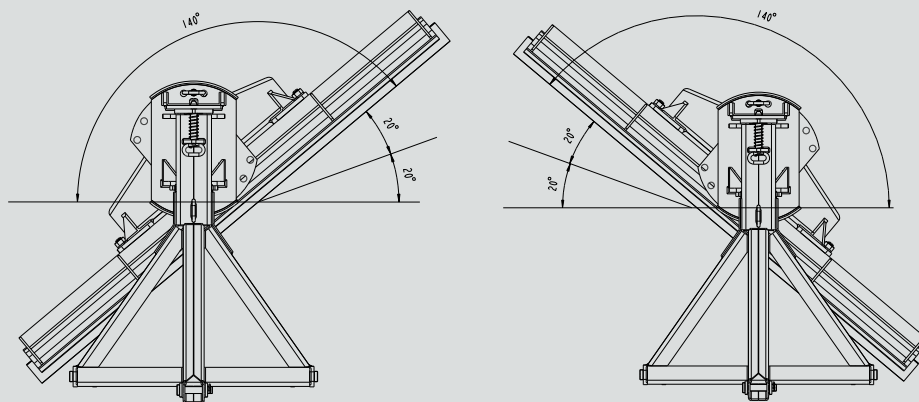


FIGURE 04



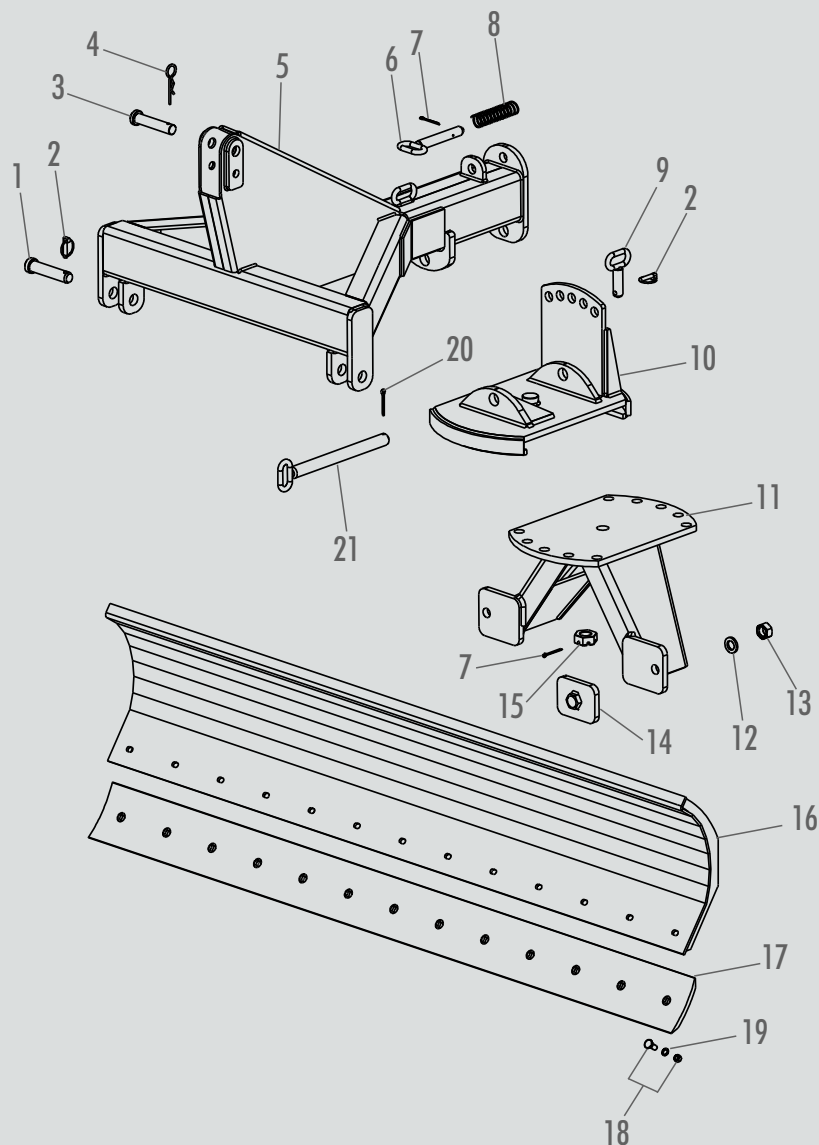
4- Figure 04 shows the Tractor Rear Planer in the horizontal position, for jobs such as:

- Leveling of roads;
- Embankments;
- General Services of soil moving, etc.

5 - The horizontal angle of the blade must be adjusted at such an angle to allow the soil to be turned in front of the blade. This will produce less resistance, in addition to moving a larger amount of earth.

6 - The blade can be mounted laterally, approximately 300 mm to the left or right, to work along fences, walls, trees, etc. To do this, loosen the nuts that secure the Planer on the reverser and displace it to the desired position.

TRACTOR REAR PLANER



*Cat. I and II

ITEM	CODE	NAME	PTMR 130*	PTMR 150	PTMR 190	PTMR 200	PTMR 230	PTMR 240
1	2.0056.2024	PIN	2	X	X	X	X	X
1	2.0030.1199	THIRD-POINT PIN	2	2	2	2	2	2
2	0.2102.0001	LOCK PIN	3	3	3	3	3	3
3	2.0053.1075	THIRD-POINT HITCHING PIN	1	1	1	1	1	1
4	0.1901.0002	FIXING CLAMP	3	1	1	1	1	1
5	5.0005.7015	FRAME GROUP – CAT I AND II	1	X	X	X	X	X
5	5.0005.7001	FRAME GROUP 150/190/200	X	1	1	1	X	X
5	5.0005.7012	FRAME GROUP	X	X	X	X	1	1
6	5.0005.7007	HORIZONTAL ADJUSTMENT PIN	1	1	1	1	1	1
7	0.1001.0004	COTTERPIN	2	2	2	2	2	2
8	2.0057.0049	SPRING	1	1	1	1	1	1
9	5.0005.7008	VERTICAL ADJUSTMENT PIN	1	1	1	1	1	1
10	5.0005.7002	ADJUSTMENT SUPPORT GROUP	1	1	1	1	1	1
11	5.0005.7003	HORIZONTAL ADJUSTMENT SUPPORT GROUP	X	X	X	X	1	1
11	5.0005.7016	HORIZONTAL ADJUSTMENT SUPPORT GROUP	1	1	1	1	X	X
12	0.0703.0013	SPRING WASHER	2	2	2	2	2	2
13	0.2304.0011	HEX. NUT	2	2	2	2	2	2
14	5.0005.7006	BLADE TIGHTENING GROUP	2	2	2	2	2	2
15	0.2301.0004	HEX. NUT	1	1	1	1	1	1
16	5.0005.7014	BLADE GROUP 130	1	X	X	X	X	X
16	5.0005.7011	BLADE GROUP 150	X	1	X	X	X	X
16	5.0005.7009	BLADE GROUP 190	X	X	1	X	X	X
16	5.0005.7004	BLADE GROUP 200	X	X	X	1	X	X
16	5.0005.7010	BLADE GROUP 230	X	X	X	X	1	X
16	5.0005.7013	BLADE GROUP 240	X	X	X	X	X	1
17	2.0057.0078	CURVED BLADE 130	1	X	X	X	X	X
17	2.0057.0062	CURVED BLADE 150	X	1	X	X	X	X
17	2.0057.0047	CURVED BLADE 190	X	X	1	X	X	X
17	2.0057.0034	CURVED BLADE 200	X	X	X	1	X	X
17	2.0057.0057	CURVED BLADE 230	X	X	X	X	1	X
17	2.0057.0070	CURVED BLADE 240	X	X	X	X	X	1
18	0.2405.0009	PLOW SCREW	5	10	13	13	15	15
19	0.0703.0002	SPRING WASHER ½" HEAVY	5	10	13	13	15	15
20	0.1001.0001	COTTERPIN 1/4X2"	1	1	1	1	1	1
21	5.0005.7005	MAIN PIN GROUP	1	1	1	1	1	1

TRACTOR REAR SHOVEL

TECHNICAL FEATURES

DESCRIPTION	PAMR 220
*LIFTING HEIGHT	2100 mm
LOADING CAPACITY	220 L
AVERAGE WEIGHT	220 kg
TYPE OF COUPLING	I e II
TRACTOR POWER	75 hp

*As per tractor configuration

The Mec-Rul Rear Shovel can be hitched to the tractor through the three-point system. Designed to carry lime, earth, silage and other materials. Practical and simple unhitching by means of a lever. Height adjustment, providing better performance in a wide range of services and tractors.

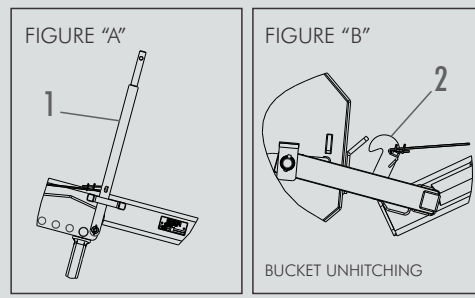
ATTENTION

Before you start operating your Tractor Rear Shovel, make sure it is fully mounted and properly attached to the tractor. This will avoid risks of accidents and damage to the equipment.

To unload the shovel, first unhitch it by:

01 – Pull the level (1), thus activating the bucket Unhitching system (2) as shown in details "A" and "B" (fig. 01).

FIG 1

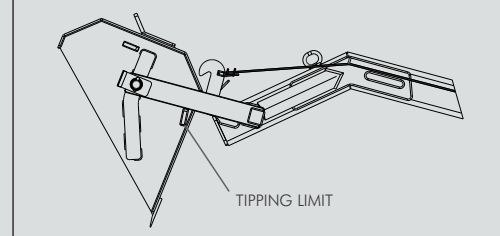


ATTENTION

When unhitching, make sure there are not people underneath the bucket, thus avoiding accidents.

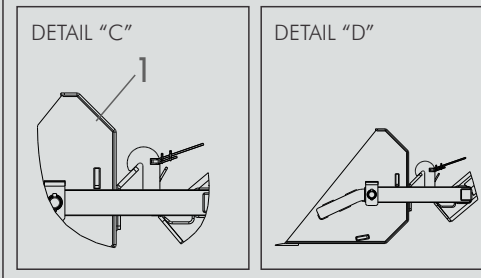
02 – After unhitching it, the bucket will tip up to its limit, as shown in Figure 02.

FIG 2



To hitch the bucket, follow the steps below:
03 – Lower the bucket (1) fully until it completely touches the ground. This will cause it to automatically hitch, as shown in details "C" and "D" (fig. 03).

FIG 3



ATTENTION

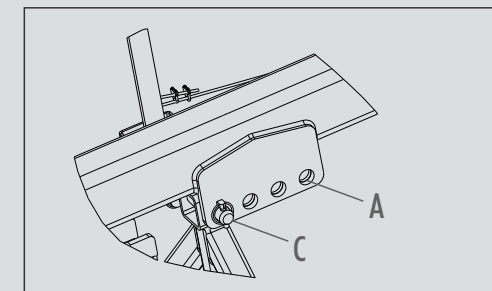
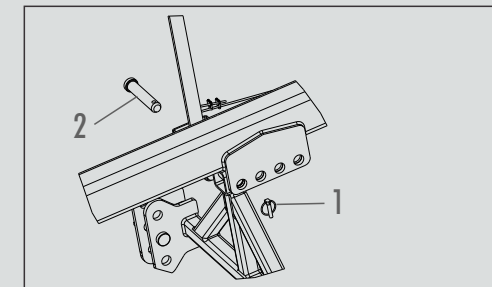
When loading the shovel, do not exceed its load capacity (220 liters), otherwise you may damage the equipment

04 - ADJUSTMENTS

The Mec-rul Tractor Rear Shovel is fitted with an adjustment System that allows you to either increase or decrease its elevation. To adjust lifting, follow the steps below:

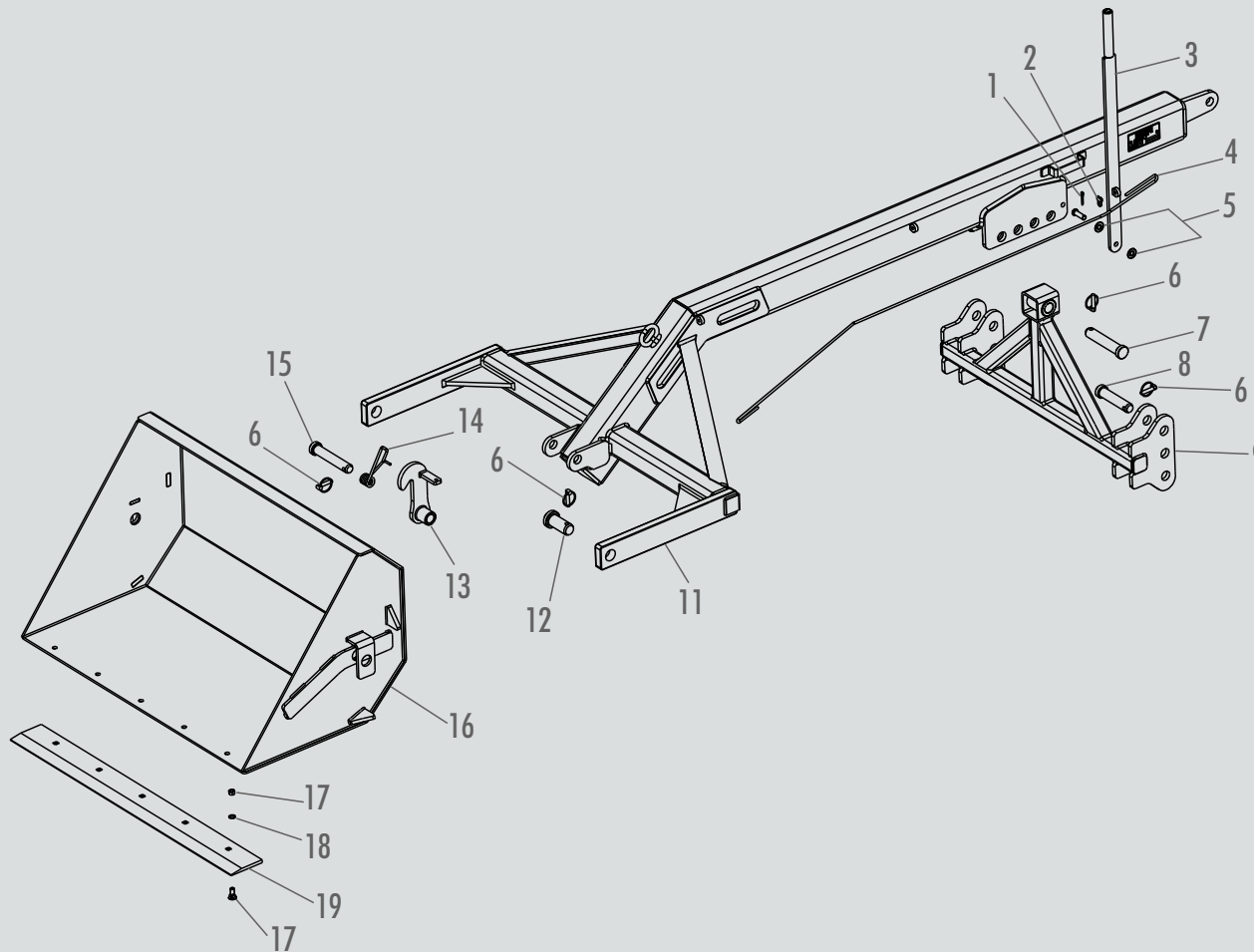
- First, release the lock with ring (1) and remove the pin (2).
- Then choose the hole that matches the height you wish to reach. .

- Complete the operation by re-positioning the pin (2) and the lock with ring (1).



Lifting adjustment: More elevation = "A"
Average elevation = "B" | Less Elevation = "C"

TRACTOR REAR SHOVEL



ITEM	CODE	NAME	PAMR 220
1	0.1001.0003	COTTERPIN	1
2	0.3101.0004	CLIPS FOR STEEL CABLE Ø3/16"	4
3	5.0005.9114	LEVER GROUP	1
4	2.0059.0077	STEEL CABLE Ø3/16"	1
5	0.0702.0004	FLAT WASHER 1/2"	2
6	0.2102.0001	LOCK PIN	5
7	3.0059.0063	ARM COUPLING PIN	1
8	2.0030.1199	THIRD-POINT PIN	2
9	5.0005.9111	ARM GROUP	1
10	3.0059.0060	LEVER HITCHING PIN	1
11	5.0005.9110	REAR SHOVEL CHASSIS GROUP	1
12	3.0059.0062	BUCKET HITCHING PIN	2
13	5.0005.9112	BUCKET UNHITCHING GROUP	1
14	2.0059.0061	TORSION SPRING	1
15	3.0059.0064	UNHITCHING PIN	1
16	5.0005.9113	BUCKET GROUP	1
17	0.2405.0009	PLOW SCREW 1/2" x 1' 1/4"	5
18	0.0703.0002	SPRING WASHER 1/2"	5
19	2.0059.0040	REAR SHOVEL BLADE	1

AGRICULTURAL WINCH

TECHNICAL FEATURES

DESCRIPTION	GAMR
OVERALL LENGTH (mm)	2.200 mm
APPROX. WEIGHT (Kg)	55 Kg
LOAD CAPACITY (Kg)	600 Kg
MAXIMUM LIFTING HEIGHT (MM)	2.500* mm

*As per tractor`s configuration.

The Mec-Rul Agricultural Winch is activated by the hydraulic system of the tractor.

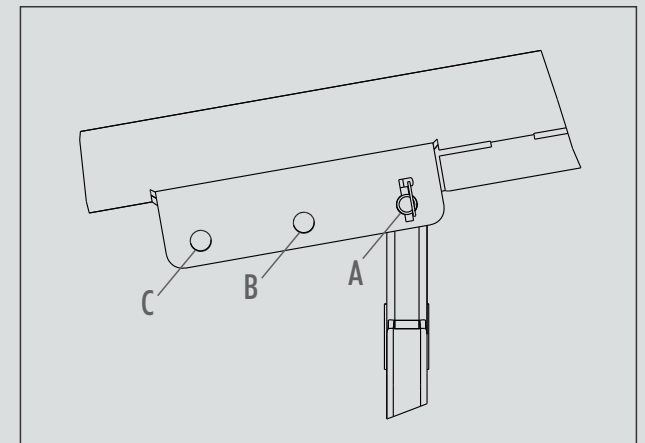
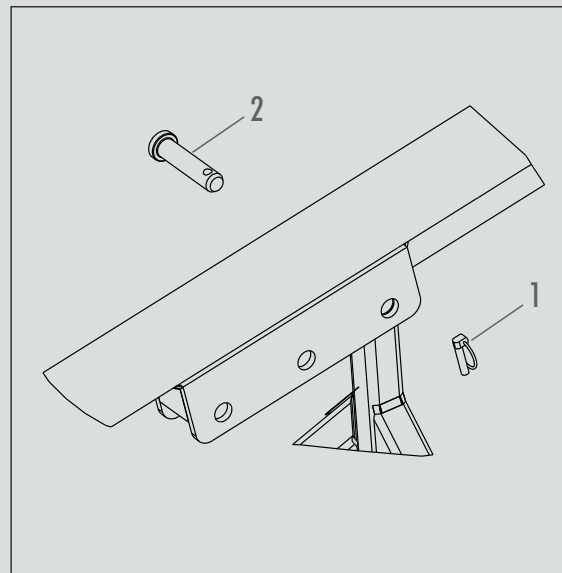
Fitted with a hook with lock ad clevis system, providing extra safety and reliability.

The winch allows you to move loads of up to 600 kg, very easily.

ADJUSTMENTS

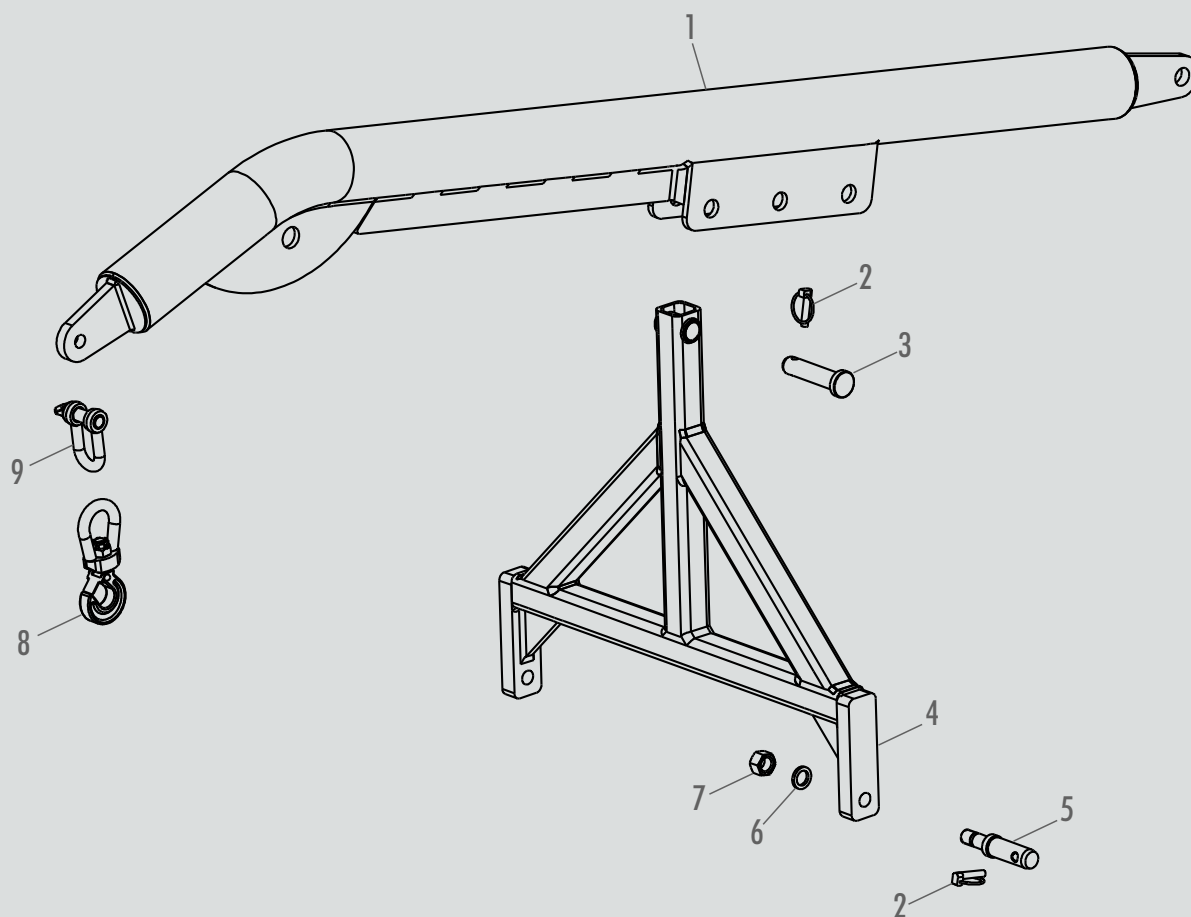
The Mec-rul agricultural winch is fitted with an adjustment system that allows you to either increase or decrease elevation. To adjust elevation follows the steps below:

- First, release the lock with ring (1) and remove the pin (2).
- Then choose the hole that matches the height you wish to reach.
- Then complete the operation by re-positioning the pin (2) and the lock with ring, (1).



Elevation Adjustments:
 Less Elevation = "A"
 Average elevation = "B"
 More elevation = "C"

AGRICULTURAL WINCH



ITEM	CODE	NAME	GAMR
1	5.0005.9101	WINCH CHASSIS GROUP	1
2	0.2102.0001	LOCK PIN	3
3	2.0059.0013	ARMS HITCHING PIN	1
4	5.0059.0101	ARMS GROUP	1
5	2.0020.1152	HITCH PIN CAT II	2
6	0.0703.0009	SPRING WASHER M20	2
7	0.2304.0005	HEX. NUT	2
8	0.3101.0002	HOOK AND EYE	1
9	0.3101.0003	CLEVIS WITH PIN	1



UM BRAÇO FORTE NA SUA TERRA

+ 55 54 3213 8800 | BR. 116 / KM 153,2 - Bairro Panazzolo - 95080-050 - Caxias do Sul/RS - Brazil

vendas@mec-rul.com.br | rugeri@mec-rul.com.br | www.mec-rul.com.br



SUBSOILER

SMR 70/3 | 160/5 | 170/5 | 170/7 | 190/5
190/7 | 190/9 | 200/7 | 200/9



AGRICULTURAL REAR PLANER

PTMR 130 | 150 | 190 | 200 | 230 | 240



TRACTOR REAR SHOVEL

PAMR 220



AGRICULTURAL WINCH

GAMR